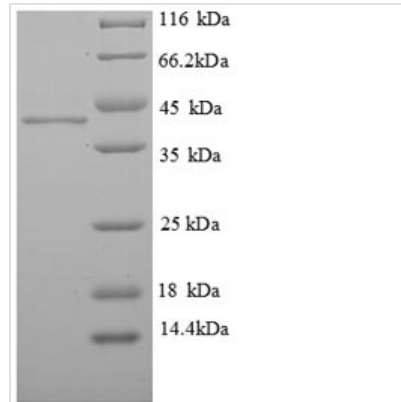




Recombinant Human ELAV-like protein 2 (ELAVL2), partial

Product Code	CSB-EP007593HU
Relevance	Binds RNA. Ses to recognize a GAAA motif. Can bind to its own 3'-UTR, the FOS 3'-UTR and the ID 3'-UTR.
Abbreviation	Recombinant Human ELAVL2 protein, partial
Storage	The shelf life is related to many factors, storage state, buffer ingredients, storage temperature and the stability of the protein itself. Generally, the shelf life of liquid form is 6 months at -20°C/-80°C. The shelf life of lyophilized form is 12 months at -20°C/-80°C.
Uniprot No.	Q12926
Alias	ELAV-like neuronal protein 1;Hu-antigen B ;HuB;Nervous system-specific RNA-binding protein Hel-N1
Product Type	Recombinant Protein
Immunogen Species	Homo sapiens (Human)
Purity	≥ 90% as determined by SDS-PAGE.
Sequence	QLSNGPTCNNTANGPTTINNNCSSPVDSGNTEDSKTNLIVNYLPQNMTQEELK SLFGSIGEIESCKLVRDKITGQSLGYGFVNYIDPKDAEKAINLNLRLQTKTIKV SYARPSSASIRDANLYVSGLPKMTQKELEQLFSQYGRITSRILVDQVTGISRG VGFIRFDKRIEAEAAIKGLNGQKPPGATEPITVKFANNPSQKTNQAILSQLYQSP NRRYPGPLAQQARFRLDNLNLMAYGVKRFSPMTIDGMTSLAGINIPGHPGT GWCIFVYNLAPDADESILWQMFPGFPAVTNVKRVIRDFNTNKCKGFGFVTMTNY DEAAMAIASLNGYRLGDRVLQVSFKTNKT
Research Area	Epigenetics and Nuclear Signaling
Source	E.coli
Target Names	ELAVL2
Expression Region	4-356aa
Notes	Repeated freezing and thawing is not recommended. Store working aliquots at 4°C for up to one week.
Tag Info	N-terminal 6xHis-tagged
Mol. Weight	42.8kDa
Protein Length	Partial
Image	



(Tris-Glycine gel) Discontinuous SDS-PAGE (reduced) with 5% enrichment gel and 15% separation gel.

Reconstitution

We recommend that this vial be briefly centrifuged prior to opening to bring the contents to the bottom. Please reconstitute protein in deionized sterile water to a concentration of 0.1-1.0 mg/mL. We recommend to add 5-50% of glycerol (final concentration) and aliquot for long-term storage at -20°C/-80°C. Our default final concentration of glycerol is 50%. Customers could use it as reference.

Shelf Life

The shelf life is related to many factors, storage state, buffer ingredients, storage temperature and the stability of the protein itself. Generally, the shelf life of liquid form is 6 months at -20°C/-80°C. The shelf life of lyophilized form is 12 months at -20°C/-80°C.