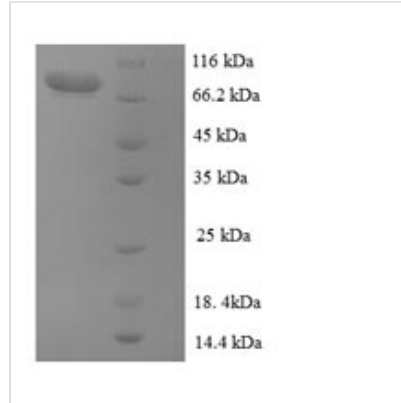




Recombinant Human Extracellular calcium-sensing receptor (CASR), partial

Product Code	CSB-EP004558HU
Relevance	Senses changes in the Extracellular domain concentration of calcium ions. The activity of this receptor is mediated by a G-protein that activates a phosphatidylinositol-calcium second messenger syst.
Abbreviation	Recombinant Human CASR protein, partial
Storage	The shelf life is related to many factors, storage state, buffer ingredients, storage temperature and the stability of the protein itself. Generally, the shelf life of liquid form is 6 months at -20°C/-80°C. The shelf life of lyophilized form is 12 months at -20°C/-80°C.
Uniprot No.	P41180
Product Type	Recombinant Proteins
Immunogen Species	Homo sapiens (Human)
Purity	Greater than 90% as determined by SDS-PAGE.
Sequence	YGPDQRAQKKGDIILGGLFPIHFGVAAKDQDLKSRPESVECIRYNFRGFRWLQ AMIFAIEEINSSPALLPNLTLGYRIFDTCNTVSKALEATLSFVAQNKIDSLNLDEF CNCSEHIPSTIAVVGATGSGVSTAVANLLGLFYIPQVSYASSSRLLSNKNQFKS FLRTIPNDEHQATAMADIIEYFRWNWVGTAADDDYGRPGIEKFREEAEERDICI DFSELISQYSDEEEIQHVVEVIQNSTAKVIVVFSSGPDLEPLIKEIVRRNITGKIWL ASEAWASSSLIAMPQYFHVVGGTIGFALKAGQIPGFREFLKKVHPRKSVHNGF AKEFWEETFNCHLQEGAKGPLPVDTFLRGHEESGDRFSNSSTAFRPLCTGDE NISSVETPYIDYTHLRISYNVYLAVYSIAHALQDIYTCLPGRGLFTNGSCADIKKV EAWQVLKHLRHLNFTNMGQVTFDECGDLVGNYSIINWHLSPEDGSIVFKEV GYYNVYAKKGERLFINEEKILWSGFSREVPFNSCSRDCLAGTRKGIIEGEPTCC FECVECPDGEYSDETDASACNKCPDDFWSNENHTSCIAKE
Research Area	Neuroscience
Source	E.coli
Target Names	CASR
Expression Region	20-602aa
Notes	Repeated freezing and thawing is not recommended. Store working aliquots at 4°C for up to one week.
Tag Info	N-terminal GST-tagged
Mol. Weight	92.8 kDa
Protein Length	Partial
Image	



(Tris-Glycine gel) Discontinuous SDS-PAGE (reduced) with 5% enrichment gel and 15% separation gel.

Shelf Life

The shelf life is related to many factors, storage state, buffer ingredients, storage temperature and the stability of the protein itself.

Generally, the shelf life of liquid form is 6 months at -20°C/-80°C. The shelf life of lyophilized form is 12 months at -20°C/-80°C.