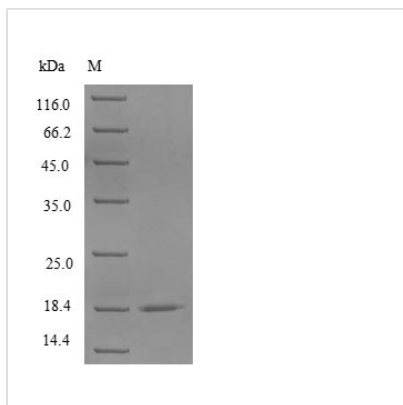


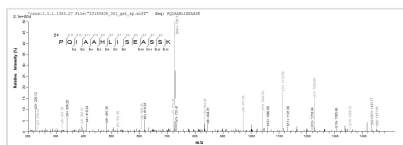


# Recombinant Rabbit CD40 ligand (CD40LG), partial

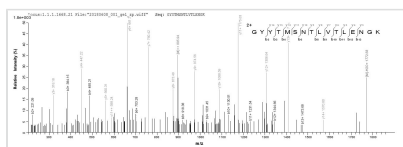
<b>Product Code</b>	CSB-YP004937RB
<b>Relevance</b>	Mediates B-cell proliferation in the absence of co-stimulus as well as IgE production in the presence of IL-4. Involved in immunoglobulin class switching.
<b>Abbreviation</b>	Recombinant Rabbit CD40LG protein, partial
<b>Storage</b>	The shelf life is related to many factors, storage state, buffer ingredients, storage temperature and the stability of the protein itself. Generally, the shelf life of liquid form is 6 months at -20°C/-80°C. The shelf life of lyophilized form is 12 months at -20°C/-80°C.
<b>Uniprot No.</b>	G1SKP7
<b>Alias</b>	Tumor necrosis factor ligand superfamily member 5
<b>Product Type</b>	Recombinant Protein
<b>Immunogen Species</b>	Oryctolagus cuniculus (Rabbit)
<b>Purity</b>	≥ 90% as determined by SDS-PAGE.
<b>Sequence</b>	MQKGDQDPQIAAHLISEASSKSSSVLQWAKKGYTMSNTLVTLENGKQLKVK RQGFYYIYAQVTFCSNQEPSSQAPFIASLCLKSSGGSERILLRAANARSSSKTC EQQSIHLGGVFELQADASVFNVTASQVNHGTGFTSFGLLKL
<b>Research Area</b>	Others
<b>Source</b>	Yeast
<b>Target Names</b>	CD40LG
<b>Expression Region</b>	113-261aa
<b>Notes</b>	Repeated freezing and thawing is not recommended. Store working aliquots at 4°C for up to one week.
<b>Tag Info</b>	N-terminal 6xHis-tagged
<b>Mol. Weight</b>	18.2kDa
<b>Protein Length</b>	Partial
<b>Image</b>	



(Tris-Glycine gel) Discontinuous SDS-PAGE (reduced) with 5% enrichment gel and 15% separation gel.



Based on the SEQUEST from database of Yeast host and target protein, the LC-MS/MS Analysis result of CSB-YP004937RB could indicate that this peptide derived from Yeast-expressed *Oryctolagus cuniculus* (Rabbit) CD40LG.



Based on the SEQUEST from database of Yeast host and target protein, the LC-MS/MS Analysis result of CSB-YP004937RB could indicate that this peptide derived from Yeast-expressed *Oryctolagus cuniculus* (Rabbit) CD40LG.

## Reconstitution

We recommend that this vial be briefly centrifuged prior to opening to bring the contents to the bottom. Please reconstitute protein in deionized sterile water to a concentration of 0.1-1.0 mg/mL. We recommend to add 5-50% of glycerol (final concentration) and aliquot for long-term storage at -20°C/-80°C. Our default final concentration of glycerol is 50%. Customers could use it as reference.

## Shelf Life

The shelf life is related to many factors, storage state, buffer ingredients, storage temperature and the stability of the protein itself.

Generally, the shelf life of liquid form is 6 months at -20°C/-80°C. The shelf life of lyophilized form is 12 months at -20°C/-80°C.