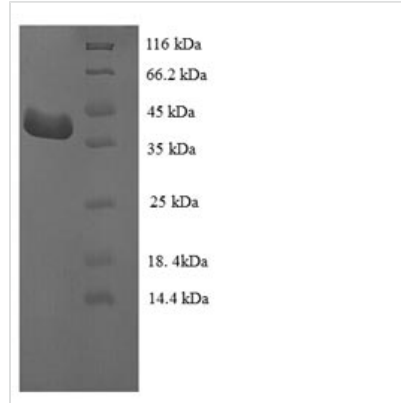




Recombinant Human Leucine-rich repeat flightless-interacting protein 1 (LRRFIP1), partial

| | |
|--------------------------|--|
| Product Code | CSB-EP013175HU |
| Relevance | Transcriptional repressor which preferentially binds to the GC-rich consensus sequence (5'-AGCCCCCGGCG-3') and may regulate expression of TNF, EGFR and PDGFA. May control smooth muscle cells proliferation following artery injury through PDGFA repression. May also bind double-stranded RNA. Positively regulates Toll-like receptor (TLR) signaling in response to agonist probably by competing with the negative FLII regulator for MYD88-binding. |
| Abbreviation | Recombinant Human LRRFIP1 protein, partial |
| Storage | The shelf life is related to many factors, storage state, buffer ingredients, storage temperature and the stability of the protein itself. Generally, the shelf life of liquid form is 6 months at -20°C/-80°C. The shelf life of lyophilized form is 12 months at -20°C/-80°C. |
| Uniprot No. | Q32MZ4 |
| Product Type | Recombinant Proteins |
| Immunogen Species | Homo sapiens (Human) |
| Purity | Greater than 90% as determined by SDS-PAGE. |
| Sequence | MTSPAAAQSREIDCLSPEAQKLAEARLAAKRAARAEAREIRMKELERQQKEVE ERPEKDFTEKGSRNMPGLSAATLASLGGTSSRRGSGDTSISIDTEASIREIKDS LAEVEEKYKKAMVSNAQLDNEKTNFMVQVDTLKDMLLEEEQLAESRRQYEE KNKEFEREKHAHSILQFQFAEVKEALKQREEMLEKHGIILNSEIATNGETSDTLN NVGYQGPTKMTKEELNALKSTGDGTLGRASEVEVKNEIVANVGKREILHNTEK EQHTEDTVKDCVDIEVFPAGENTEDQKSS EDTAPFLGTLGATYEEQSLSTCS LDR |
| Research Area | Transcription |
| Source | E.coli |
| Target Names | LRRFIP1 |
| Expression Region | 1-314aa |
| Notes | Repeated freezing and thawing is not recommended. Store working aliquots at 4°C for up to one week. |
| Tag Info | N-terminal 6xHis-tagged |
| Mol. Weight | 40.1kDa |
| Protein Length | Partial of Isoform 3 |
| Image | |



(Tris-Glycine gel) Discontinuous SDS-PAGE (reduced) with 5% enrichment gel and 15% separation gel.

Shelf Life

The shelf life is related to many factors, storage state, buffer ingredients, storage temperature and the stability of the protein itself.

Generally, the shelf life of liquid form is 6 months at -20°C/-80°C. The shelf life of lyophilized form is 12 months at -20°C/-80°C.