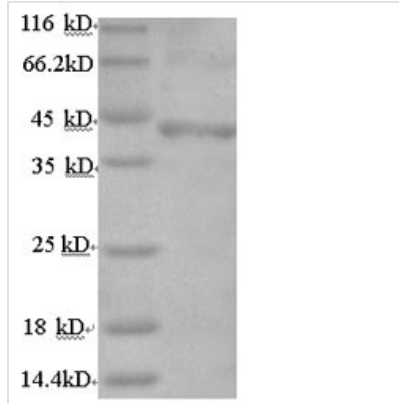


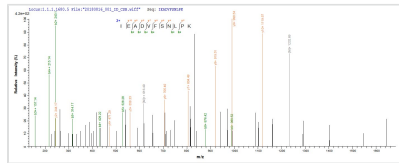


# Recombinant Human Follicle-stimulating hormone receptor (FSHR), partial

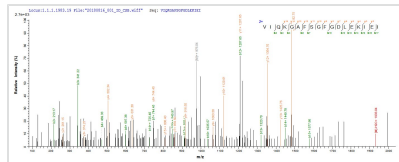
<b>Product Code</b>	CSB-EP009021HU
<b>Relevance</b>	Receptor for follicle-stimulating hormone. The activity of this receptor is mediated by G proteins which activate adenylate cyclase.
<b>Abbreviation</b>	Recombinant Human FSHR protein, partial
<b>Storage</b>	The shelf life is related to many factors, storage state, buffer ingredients, storage temperature and the stability of the protein itself. Generally, the shelf life of liquid form is 6 months at -20°C/-80°C. The shelf life of lyophilized form is 12 months at -20°C/-80°C.
<b>Uniprot No.</b>	P23945
<b>Product Type</b>	Recombinant Proteins
<b>Immunogen Species</b>	Homo sapiens (Human)
<b>Purity</b>	Greater than 90% as determined by SDS-PAGE.
<b>Sequence</b>	CHHRICHCSNRVFLCQESKVTEIPSDLPRNAIELRFVLTKLRVIQKGAFGSGFDL EKIEISQNDVLEVIEADVFSNLPKLHEIRIEKANNLLYINPEAFQNLPNLQYLLISN TGIKHLPDVHKKIHSLSLQKVLLDIQDNINIHTIERNSEFVGLSFESVILWLNKNGIQEIH NCAFNGTQLDELNLSNNDNLEELPNDVDFHGASGPVILDISRTRIHSLPSYGLEN LKKLRARSTYNLKKLPTLEKLVALMEASLTYP SHCCAFANWRRQISELHPICNK SILRQEVDMYMTQARGQRSSLAEDNESSYRSGFDMTYTEFDYDLCNEVVDVTC SPKPDFAFNPCEDIMGYNILR
<b>Research Area</b>	Neuroscience
<b>Source</b>	E.coli
<b>Target Names</b>	FSHR
<b>Expression Region</b>	18-366AA
<b>Notes</b>	Repeated freezing and thawing is not recommended. Store working aliquots at 4°C for up to one week.
<b>Tag Info</b>	N-terminal 6xHis-tagged
<b>Mol. Weight</b>	44.0 kDa
<b>Protein Length</b>	Partial
<b>Image</b>	



(Tris-Glycine gel) Discontinuous SDS-PAGE (reduced) with 5% enrichment gel and 15% separation gel.



Based on the SEQUEST from database of E.coli host and target protein, the LC-MS/MS Analysis result of CSB-EP009021HU could indicate that this peptide derived from E.coli-expressed Homo sapiens (Human) FSHR.



Based on the SEQUEST from database of E.coli host and target protein, the LC-MS/MS Analysis result of CSB-EP009021HU could indicate that this peptide derived from E.coli-expressed Homo sapiens (Human) FSHR.

### Shelf Life

The shelf life is related to many factors, storage state, buffer ingredients, storage temperature and the stability of the protein itself.

Generally, the shelf life of liquid form is 6 months at -20°C/-80°C. The shelf life of lyophilized form is 12 months at -20°C/-80°C.