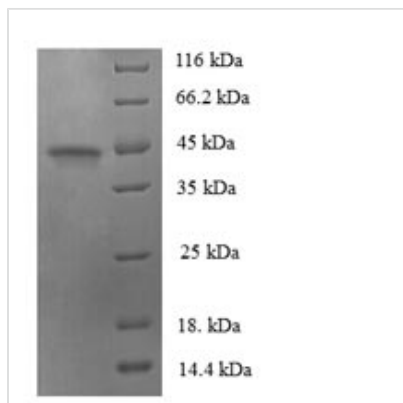




Recombinant Human Protein FAM110B (FAM110B)

Product Code	CSB-EP008005HU
Relevance	May be involved in tumor progression.
Abbreviation	Recombinant Human FAM110B protein
Storage	The shelf life is related to many factors, storage state, buffer ingredients, storage temperature and the stability of the protein itself. Generally, the shelf life of liquid form is 6 months at -20°C/-80°C. The shelf life of lyophilized form is 12 months at -20°C/-80°C.
Uniprot No.	Q8TC76
Product Type	Recombinant Protein
Immunogen Species	Homo sapiens (Human)
Purity	≥ 90% as determined by SDS-PAGE.
Sequence	MPTETLQTGSMVKPVSPAGTFTSAVPLRILNKGPDYFRRQAEPNPKRLSAVER LEADKAKYVKSQEVINAKQEPVKPAVLAKPPVCPAAKRALGSPTLKVFGNHAK TESGVQRENKLEILKNIINSSEGSSSGSGHGHSSRNWPPHRSEATDLHRHSF AESLKVYPTQGRRSPQEGGSHVGRRLLEQSAESFLHVSHSSSDIRKVTSVKPL KAIPCSSSAPPLPPKPKIAAIAISMKSPEADPVEPACGVSRPQLQSKSDLSDR YFRVDADVERFFNYCGLDPEELENLGMENFARANSDIISLNFRRSASMISSDCE QSQDSNSDLRNDSDANDRVYPYGISAIERNARIKWLYSIKQARESQKVSHV
Research Area	Cancer
Source	E.coli
Target Names	FAM110B
Expression Region	1-370aa
Notes	Repeated freezing and thawing is not recommended. Store working aliquots at 4°C for up to one week.
Tag Info	N-terminal 6xHis-tagged
Mol. Weight	44.7kDa
Protein Length	Full Length
Image	



(Tris-Glycine gel) Discontinuous SDS-PAGE (reduced) with 5% enrichment gel and 15% separation gel.

Reconstitution

We recommend that this vial be briefly centrifuged prior to opening to bring the contents to the bottom. Please reconstitute protein in deionized sterile water to a concentration of 0.1-1.0 mg/mL. We recommend to add 5-50% of glycerol (final concentration) and aliquot for long-term storage at -20°C/-80°C. Our default final concentration of glycerol is 50%. Customers could use it as reference.

Shelf Life

The shelf life is related to many factors, storage state, buffer ingredients, storage temperature and the stability of the protein itself. Generally, the shelf life of liquid form is 6 months at -20°C/-80°C. The shelf life of lyophilized form is 12 months at -20°C/-80°C.