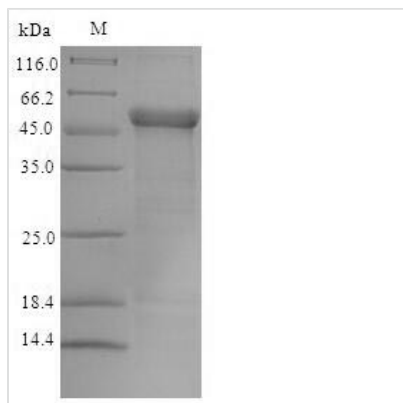




Recombinant Human Trimethyllysine dioxygenase, mitochondrial (TMLHE)

Product Code	CSB-EP023908HU
Relevance	Converts trimethyllysine (TML) into hydroxytrimethyllysine (HTML).
Abbreviation	Recombinant Human TMLHE protein
Storage	The shelf life is related to many factors, storage state, buffer ingredients, storage temperature and the stability of the protein itself. Generally, the shelf life of liquid form is 6 months at -20°C/-80°C. The shelf life of lyophilized form is 12 months at -20°C/-80°C.
Uniprot No.	Q9NVH6
Alias	Epsilon-trimethyllysine 2-oxoglutarate dioxygenase;Epsilon-trimethyllysine hydroxylaseTML hydroxylaseTML-alpha-ketoglutarate dioxygenase ;TML dioxygenase ;TMLD
Product Type	Recombinant Protein
Immunogen Species	Homo sapiens (Human)
Purity	≥ 90% as determined by SDS-PAGE.
Sequence	LLKGGVIYPALPQPNNFKSLLPLAVHWHHTASKSLTCAWQQHEDHFELKYANTV MRFDYVWLRDHCRSASCYNSKTHQRSLDASVDLCIKPKTIRLDETTLFFFTWP DGHVTKYDLNWLVKNSYEGQKQKVIQPRILWNAEIYQQAQVPSVDCQSFLET NEGLKKFLQNFLLYGIAFVENVPPTQEHEKLAERISLIRETIYGRMWYFTSDFS RGDTAYTKLALDRHTDTTYFQEPGQVVFHCLKHEGTGGRTLLVDGFYAAEQV LQKAPEEFELLSKVPLKHEYIEDVGECHNHMIGIPVLNIYPWNKELYLIRLFKE KQNTVNRQWNSSLQCDIPERILTYRHFVSGTSIEHRGSLI
Research Area	Metabolism
Source	E.coli
Target Names	TMLHE
Expression Region	16-376aa
Notes	Repeated freezing and thawing is not recommended. Store working aliquots at 4°C for up to one week.
Tag Info	N-terminal 6xHis-tagged
Mol. Weight	46.1kDa
Protein Length	Full Length of Mature Protein
Image	



(Tris-Glycine gel) Discontinuous SDS-PAGE (reduced) with 5% enrichment gel and 15% separation gel.

Reconstitution

We recommend that this vial be briefly centrifuged prior to opening to bring the contents to the bottom. Please reconstitute protein in deionized sterile water to a concentration of 0.1-1.0 mg/mL. We recommend to add 5-50% of glycerol (final concentration) and aliquot for long-term storage at -20°C/-80°C. Our default final concentration of glycerol is 50%. Customers could use it as reference.

Shelf Life

The shelf life is related to many factors, storage state, buffer ingredients, storage temperature and the stability of the protein itself. Generally, the shelf life of liquid form is 6 months at -20°C/-80°C. The shelf life of lyophilized form is 12 months at -20°C/-80°C.