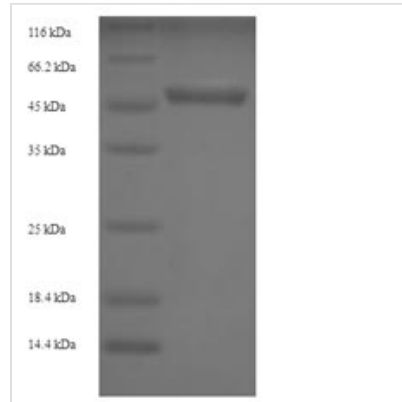




Recombinant Human Ubiquitin carboxyl-terminal hydrolase isozyme L5 (UCHL5)

Product Code	CSB-EP025544HU
Relevance	Protease that specifically cleaves 'Lys-48'-linked polyubiquitin chains. Deubiquitinating enzyme associated with the 19S regulatory subunit of the 26S proteasome. Putative regulatory component of the INO80 complex; however is inactive in the INO80 complex and is activated by a transient interaction of the INO80 complex with the proteasome via ADRM1.
Abbreviation	Recombinant Human UCHL5 protein
Storage	The shelf life is related to many factors, storage state, buffer ingredients, storage temperature and the stability of the protein itself. Generally, the shelf life of liquid form is 6 months at -20°C/-80°C. The shelf life of lyophilized form is 12 months at -20°C/-80°C.
Uniprot No.	Q9Y5K5
Alias	Ubiquitin C-terminal hydrolase UCH37Ubiquitin thioesterase L5
Product Type	Recombinant Protein
Immunogen Species	Homo sapiens (Human)
Purity	Greater than 90% as determined by SDS-PAGE.
Sequence	MTGNAGEWCLMESDPGVFTELIKGFGCRGAQVEEIWSLEPENFEKLKPVHGLI FLFKWQPGEEPAGSVVQDSRLDTIFFAKQVINNACATQAIIVSVLLNCTHQDVHL GETLSEFKFESQSFDAAMKGLALSNSDVIRQVHNSFARQQMFEDTKTSAKEE DAHFVSYVPVNGRLYELDGLREGPIDLGACNQDDWISAVRPVIEKRIQKYSE GEIRFNLMAIVSDRKMIEYEQKIAELQRQLAEEPMDTDQGNMLSAIQSEVAKNQ MLIEEEVQKLKRYKIENIRRKHNYLPPFIMELLKTAEHQQLIPLVEKFEKHFETL LGK
Research Area	Epigenetics and Nuclear Signaling
Source	E.coli
Target Names	UCHL5
Expression Region	1-326aa
Notes	Repeated freezing and thawing is not recommended. Store working aliquots at 4°C for up to one week.
Tag Info	N-terminal 6xHis-SUMO-tagged
Mol. Weight	53.4kDa
Protein Length	Full Length of Isoform 4
Image	



(Tris-Glycine gel) Discontinuous SDS-PAGE (reduced) with 5% enrichment gel and 15% separation gel.

Reconstitution

We recommend that this vial be briefly centrifuged prior to opening to bring the contents to the bottom. Please reconstitute protein in deionized sterile water to a concentration of 0.1-1.0 mg/mL. We recommend to add 5-50% of glycerol (final concentration) and aliquot for long-term storage at -20°C/-80°C. Our default final concentration of glycerol is 50%. Customers could use it as reference.

Shelf Life

The shelf life is related to many factors, storage state, buffer ingredients, storage temperature and the stability of the protein itself. Generally, the shelf life of liquid form is 6 months at -20°C/-80°C. The shelf life of lyophilized form is 12 months at -20°C/-80°C.