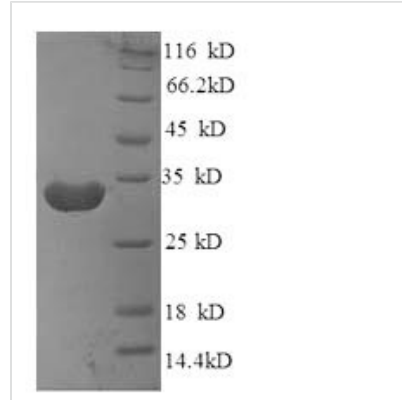




Recombinant Mouse B-lymphocyte antigen CD20 (Ms4a1), partial

| | |
|--------------------------|---|
| Product Code | CSB-EP015007MO2 |
| Relevance | This protein may be involved in the regulation of B-cell activation and proliferation. |
| Abbreviation | Recombinant Mouse Ms4a1 protein, partial |
| Storage | The shelf life is related to many factors, storage state, buffer ingredients, storage temperature and the stability of the protein itself. Generally, the shelf life of liquid form is 6 months at -20°C/-80°C. The shelf life of lyophilized form is 12 months at -20°C/-80°C. |
| Uniprot No. | P19437 |
| Alias | B-cell differentiation antigen Ly-44Lymphocyte antigen 44Membrane-spanning 4-domains subfamily A member 1; CD20 |
| Product Type | Recombinant Protein |
| Immunogen Species | Mus musculus (Mouse) |
| Purity | Greater than 90% as determined by SDS-PAGE. |
| Sequence | ILNMTLSHFLKMRRLELIQTSKPYVDIYDCEPSNSSEKNSPSTQYCNSIQSVFLG ILSAMLISAFFQKLVTAGIVENEWKRMCTRSKSNVLLSAGEKNEQTIKMKEEII ELSGVSSQPKNEEEIEIIPVQEEEEEEAEINFPAPPQEQESLPVENEIAP |
| Research Area | Others |
| Source | E.coli |
| Target Names | Ms4a1 |
| Expression Region | 132-291aa |
| Notes | Repeated freezing and thawing is not recommended. Store working aliquots at 4°C for up to one week. |
| Tag Info | N-terminal 6xHis-SUMO-tagged |
| Mol. Weight | 34.1kDa |
| Protein Length | Partial |
| Image | |



(Tris-Glycine gel) Discontinuous SDS-PAGE (reduced) with 5% enrichment gel and 15% separation gel.

Reconstitution

We recommend that this vial be briefly centrifuged prior to opening to bring the contents to the bottom. Please reconstitute protein in deionized sterile water to a concentration of 0.1-1.0 mg/mL. We recommend to add 5-50% of glycerol (final concentration) and aliquot for long-term storage at -20°C/-80°C. Our default final concentration of glycerol is 50%. Customers could use it as reference.

Shelf Life

The shelf life is related to many factors, storage state, buffer ingredients, storage temperature and the stability of the protein itself. Generally, the shelf life of liquid form is 6 months at -20°C/-80°C. The shelf life of lyophilized form is 12 months at -20°C/-80°C.