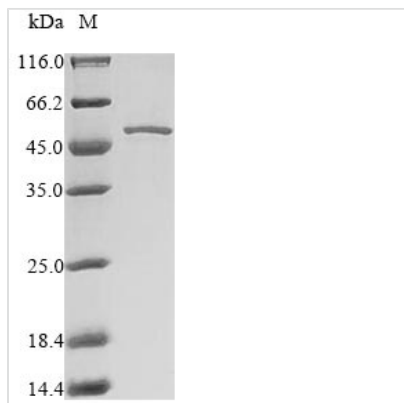




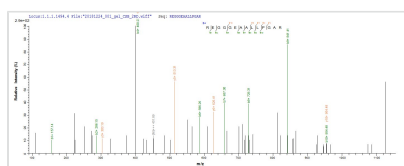
Recombinant Mouse Induced myeloid leukemia cell differentiation protein Mcl-1 homolog (Mcl1), partial

Product Code	CSB-EP013588MO
Relevance	Involved in the regulation of apoptosis versus cell survival, and in the maintenance of viability but not of proliferation. Mediates its effects by interactions with a number of other regulators of apoptosis. Isoform 2 has antiapoptotic activity.
Abbreviation	Recombinant Mouse Mcl1 protein, partial
Storage	The shelf life is related to many factors, storage state, buffer ingredients, storage temperature and the stability of the protein itself. Generally, the shelf life of liquid form is 6 months at -20°C/-80°C. The shelf life of lyophilized form is 12 months at -20°C/-80°C.
Uniprot No.	P97287
Alias	Bcl-2-related protein EAT/mcl1
Product Type	Recombinant Protein
Immunogen Species	Mus musculus (Mouse)
Purity	Greater than 90% as determined by SDS-PAGE.
Sequence	MFGLRRNAVIGLNLYCGGASLGAGGGSPAGARLVAAEEAKARREGGGEAALLP GARVVARPPPVGAEADPDVTASAERRLHKSPGLLAVPPEEMAASAAAIVSPEE ELDGCEPEAIGKRPAVLPLLERVSEAAKSSGADGSLPSTPPPPEEEEDDLYRQ SLEIISRYLREQATGSKDSKPLGEAGAAGRRALETLRRVGDGVQRNHETAFAQG MLRKLDIKNEGDVKSFSRVMVHVFKDGVTNWGRIVTLISFGAFVAKHLKSVNQ ESFIEPLAETITDVLVTRTKRDWLKQRGWDFVEFFHVQDLEGG
Research Area	Others
Source	E.coli
Target Names	Mcl1
Expression Region	1-308aa
Notes	Repeated freezing and thawing is not recommended. Store working aliquots at 4°C for up to one week.
Tag Info	N-terminal 6xHis-SUMO-tagged
Mol. Weight	48.9kDa
Protein Length	Partial

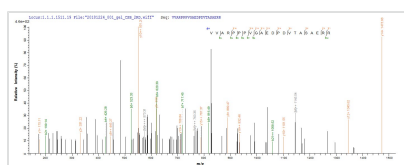
Image



(Tris-Glycine gel) Discontinuous SDS-PAGE (reduced) with 5% enrichment gel and 15% separation gel.



Based on the SEQUEST from database of E.coli host and target protein, the LC-MS/MS Analysis result of CSB-EP013588MO could indicate that this peptide derived from E.coli-expressed Mus musculus (Mouse) Mcl1.



Based on the SEQUEST from database of E.coli host and target protein, the LC-MS/MS Analysis result of CSB-EP013588MO could indicate that this peptide derived from E.coli-expressed Mus musculus (Mouse) Mcl1.

Reconstitution

We recommend that this vial be briefly centrifuged prior to opening to bring the contents to the bottom. Please reconstitute protein in deionized sterile water to a concentration of 0.1-1.0 mg/mL. We recommend to add 5-50% of glycerol (final concentration) and aliquot for long-term storage at -20°C/-80°C. Our default final concentration of glycerol is 50%. Customers could use it as reference.

Shelf Life

The shelf life is related to many factors, storage state, buffer ingredients, storage temperature and the stability of the protein itself. Generally, the shelf life of liquid form is 6 months at -20°C/-80°C. The shelf life of lyophilized form is 12 months at -20°C/-80°C.