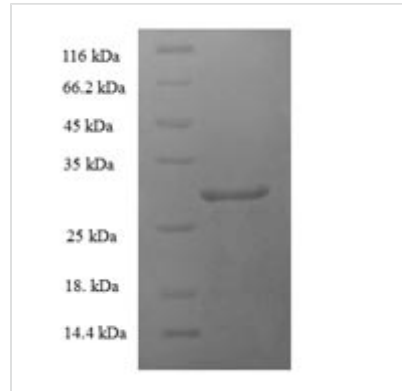




# Recombinant Human Parathyroid hormone 2 receptor (PTH2R), partial

<b>Product Code</b>	CSB-EP018990HU
<b>Relevance</b>	This is a specific receptor for parathyroid hormone. The activity of this receptor is mediated by G proteins which activate adenylyl cyclase. PTH2R may be responsible for PTH effects in a number of physiological systs. It may play a significant role in pancreatic function. PTH2R presence in neurons indicates that it may function as a neurotransmitter receptor .
<b>Abbreviation</b>	Recombinant Human PTH2R protein, partial
<b>Storage</b>	The shelf life is related to many factors, storage state, buffer ingredients, storage temperature and the stability of the protein itself. Generally, the shelf life of liquid form is 6 months at -20°C/-80°C. The shelf life of lyophilized form is 12 months at -20°C/-80°C.
<b>Uniprot No.</b>	P49190
<b>Product Type</b>	Recombinant Protein
<b>Immunogen Species</b>	Homo sapiens (Human)
<b>Purity</b>	≥ 90% as determined by SDS-PAGE.
<b>Sequence</b>	DSDGTITIEEQIVLVLKAKVQCELNITAQLQEGEGNCFPEWDGLICWPRGTVGK ISAVPCPPYIYDFNHKGVAFRHCNPNGTWFDMHSLNKTWANYS DCLRFLQPD SIGKQEFFERLY
<b>Research Area</b>	Neuroscience
<b>Source</b>	E.coli
<b>Target Names</b>	PTH2R
<b>Expression Region</b>	27-145aa
<b>Notes</b>	Repeated freezing and thawing is not recommended. Store working aliquots at 4°C for up to one week.
<b>Tag Info</b>	N-terminal 6xHis-SUMO-tagged
<b>Mol. Weight</b>	29.6kDa
<b>Protein Length</b>	Extracellular Domain
<b>Image</b>	



(Tris-Glycine gel) Discontinuous SDS-PAGE (reduced) with 5% enrichment gel and 15% separation gel.

### Reconstitution

We recommend that this vial be briefly centrifuged prior to opening to bring the contents to the bottom. Please reconstitute protein in deionized sterile water to a concentration of 0.1-1.0 mg/mL. We recommend to add 5-50% of glycerol (final concentration) and aliquot for long-term storage at  $-20^{\circ}\text{C}/-80^{\circ}\text{C}$ . Our default final concentration of glycerol is 50%. Customers could use it as reference.

### Shelf Life

The shelf life is related to many factors, storage state, buffer ingredients, storage temperature and the stability of the protein itself.

Generally, the shelf life of liquid form is 6 months at  $-20^{\circ}\text{C}/-80^{\circ}\text{C}$ . The shelf life of lyophilized form is 12 months at  $-20^{\circ}\text{C}/-80^{\circ}\text{C}$ .