



# Recombinant Human AP-2 complex subunit mu (AP2M1)

<b>Product Code</b>	CSB-EP001872HU
<b>Relevance</b>	<p>Component of the adaptor protein complex 2 (AP-2). Adaptor protein complexes function in protein transport via transport vesicles in different mbrane traffic pathways. Adaptor protein complexes are vesicle coat components and appear to be involved in cargo selection and vesicle formation. AP-2 is involved in clathrin-dependent endocytosis in which cargo proteins are incorporated into vesicles surrounded by clathrin (clathrin-coated vesicles, CCVs) which are destined for fusion with the early endosome. The clathrin lattice serves as a mechanical scaffold but is itself unable to bind directly to mbrane components. Clathrin-associated adaptor protein (AP) complexes which can bind directly to both the clathrin lattice and to the lipid and protein components of mbranes are considered to be the major clathrin adaptors contributing the CCV formation. AP-2 also serves as a cargo receptor to selectively sort the mbrane proteins involved in receptor-mediated endocytosis. AP-2 ses to play a role in the recycling of synaptic vesicle mbranes from the presynaptic surface. AP-2 recognizes Y-X-X-[FILMV] (Y-X-X-Phi) and [ED]-X-X-X-L-[LI] endocytosis signal motifs within the cytosolic tails of transmbrane cargo molecules. AP-2 may also play a role in maintaining normal post-endocytic trafficking through the ARF6-regulated, non-clathrin pathway. The AP-2 mu subunit binds to transmbrane cargo proteins; it recognizes the Y-X-X-Phi motifs. The surface region interacting with to the Y-X-X-Phi motif is inaccessible in cytosolic AP-2, but becomes accessible through a conformational change following phosphorylation of AP-2 mu subunit at 'Tyr-156' in mbrane-associated AP-2. The mbrane-specific phosphorylation event appears to involve assbled clathrin which activates the AP-2 mu kinase AAK1 . Plays a role in endocytosis of frizzled family mbers upon Wnt signaling .</p>
<b>Abbreviation</b>	Recombinant Human AP2M1 protein
<b>Storage</b>	The shelf life is related to many factors, storage state, buffer ingredients, storage temperature and the stability of the protein itself. Generally, the shelf life of liquid form is 6 months at -20°C/-80°C. The shelf life of lyophilized form is 12 months at -20°C/-80°C.
<b>Uniprot No.</b>	Q96CW1
<b>Alias</b>	AP-2 mu chain;Adaptin-mu2;Adaptor protein complex AP-2 subunit mu;Adaptor-related protein complex 2 subunit mu;Clathrin assembly protein complex 2 mu medium chain;Clathrin coat assembly protein AP50;Clathrin coat-associated protein AP50;HA2 50 kDa subunit;Plasma membrane adaptor AP-2 50 kDa protein
<b>Product Type</b>	Recombinant Protein
<b>Immunogen Species</b>	Homo sapiens (Human)
<b>Purity</b>	Greater than 90% as determined by SDS-PAGE.


**Sequence**

MIGGLFIYNHKGEVLISR VYRDDIGRNAVD AFRVNVIHARQQV RSPVTNIARTSF  
 FHVKRSNIWLA AVTKQNVNAAMVFEFLYKMCDVMAAYFGKISEENIKNNFVLIY  
 ELLDEILDFGYPQNSETGALKTFITQQGIKSQHQTKEEQSQITSQVGTGQIGWRR  
 EGIKYRRNELFLDVLESVNLLMSPQQGQVLSAHVSGRVVMKSYLSGMPECKFG  
 MNDKIVIEKQKGKGTADETSKSGKQSI AIDDCCTFHQCVRLSKFDSERSISFIPPDG  
 EFELMRYRTTKDIILPFRVIPLVREVGRTKLEVKVVIKSNFKPSLLAQKIEVRIPTP  
 LNTSGVQVICMKGKAKYKASENAIVWKIKRMAGMKESQISAEIELLPTNDKKKW  
 ARPPISMNFVFPFAPSGLKVRYLKVFE PKLNYS DHDVIKWVRYIGRS GIYETRC

**Research Area**

Transport

**Source**

E.coli

**Target Names**

AP2M1

**Expression Region**

1-435aa

**Notes**

Repeated freezing and thawing is not recommended. Store working aliquots at 4°C for up to one week.

**Tag Info**

N-terminal 6xHis-SUMO-tagged

**Mol. Weight**

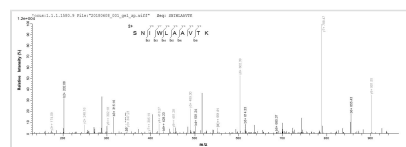
65.7kDa

**Protein Length**

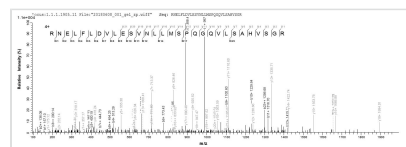
Full Length

**Image**


(Tris-Glycine gel) Discontinuous SDS-PAGE (reduced) with 5% enrichment gel and 15% separation gel.



Based on the SEQUEST from database of E.coli host and target protein, the LC-MS/MS Analysis result of CSB-EP001872HU could indicate that this peptide derived from E.coli-expressed Homo sapiens (Human) AP2M1.



Based on the SEQUEST from database of E.coli host and target protein, the LC-MS/MS Analysis result of CSB-EP001872HU could indicate that this peptide derived from E.coli-expressed Homo sapiens (Human) AP2M1.

**Reconstitution**

We recommend that this vial be briefly centrifuged prior to opening to bring the contents to the bottom. Please reconstitute protein in deionized sterile water to a concentration of 0.1-1.0 mg/mL. We recommend to add 5-50% of glycerol (final concentration) and aliquot for long-term storage at -20°C/-80°C. Our default final



concentration of glycerol is 50%. Customers could use it as reference.

### Shelf Life

The shelf life is related to many factors, storage state, buffer ingredients, storage temperature and the stability of the protein itself.

Generally, the shelf life of liquid form is 6 months at -20°C/-80°C. The shelf life of lyophilized form is 12 months at -20°C/-80°C.