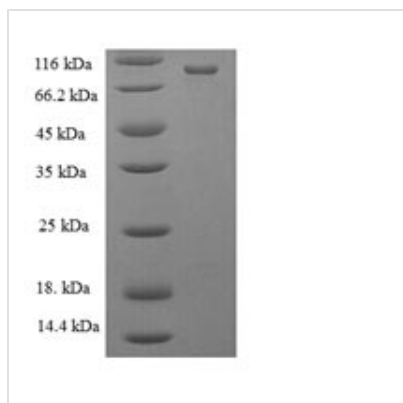




Recombinant Escherichia coli DNA mismatch repair protein MutL (mutL)

Product Code	CSB-EP543397ENV
Relevance	This protein is involved in the repair of mismatches in DNA. It is required for dam-dependent methyl-directed DNA mismatch repair. May act as a "molecular matchmaker", a protein that promotes the formation of a stable complex between two or more DNA-binding proteins in an ATP-dependent manner without itself being part of the final effector complex. The ATPase activity of MutL is stimulated by DNA.
Abbreviation	Recombinant E.coli mutL protein
Storage	The shelf life is related to many factors, storage state, buffer ingredients, storage temperature and the stability of the protein itself. Generally, the shelf life of liquid form is 6 months at -20°C/-80°C. The shelf life of lyophilized form is 12 months at -20°C/-80°C.
Uniprot No.	P23367
Product Type	Recombinant Protein
Immunogen Species	Escherichia coli (strain K12)
Purity	≥ 90% as determined by SDS-PAGE.
Sequence	MPIQVLPPQLANQIAAGEVVERPASVVKELVENS LDAGATRIDI DIERGGAKLIRI RDNGCGIKKDELALALARHATSKIASLDDLEAIISLGRGEGALASISSVSR LTLTS RTAEQQEAWQAYAEGRDMNVTVKPAAHPVGT TLEVLDFYNT PARRKFLRTE KTEFNHIDEIIRRIALARFDVTINLSHNGKIVRQYRAVPEGGQKERRLGAICGTAF LEQALAI EWQHGD LTLRGWVADPNHTTPALAEIQYCVNGRMMRDRLINHAIR QACEDKLGADQQPAFVLYLEIDPHQVDVNVHPAKHEVRFHQSR LVHDFIYQG VLSVLQQQLETPPLDDEPQPAPRSIPENRVAAGR NHFAEPAAREPVAPRYTP APASGSRPAAPWPNAQPGYQKQQGEVYRQLLQTPAPMQKLK APEPQEPALA ANSQSFRVLTIVHSDCALLERDGNISLLSLPVAERWLRQAQLTPGEAPVCAQ PLLIPLRLKVSAAEKSAL EKAQSALAE LGIDFQSDAQHV TIRAVPLPLRQQNLQI LIPELIGYLAKQSVFEPGNIAQWIARNLMSEHAQWSMAQAITLLADVERLCPQL VKTPPGLLQSVDLHPAIAKALKDE
Research Area	Others
Source	E.coli
Target Names	mutL
Expression Region	1-615aa
Notes	Repeated freezing and thawing is not recommended. Store working aliquots at 4°C for up to one week.
Tag Info	N-terminal 6xHis-tagged
Mol. Weight	71.9kDa

**Protein Length****Full Length****Image**

(Tris-Glycine gel) Discontinuous SDS-PAGE (reduced) with 5% enrichment gel and 15% separation gel.

Reconstitution

We recommend that this vial be briefly centrifuged prior to opening to bring the contents to the bottom. Please reconstitute protein in deionized sterile water to a concentration of 0.1-1.0 mg/mL. We recommend to add 5-50% of glycerol (final concentration) and aliquot for long-term storage at -20°C/-80°C. Our default final concentration of glycerol is 50%. Customers could use it as reference.

Shelf Life

The shelf life is related to many factors, storage state, buffer ingredients, storage temperature and the stability of the protein itself. Generally, the shelf life of liquid form is 6 months at -20°C/-80°C. The shelf life of lyophilized form is 12 months at -20°C/-80°C.