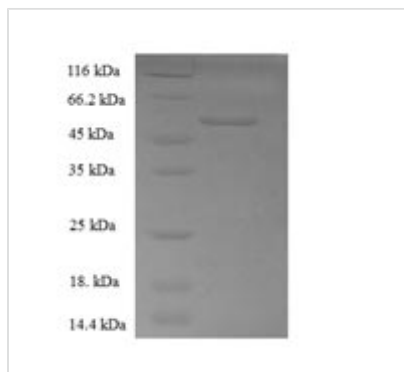




Recombinant human Retinol dehydrogenase 11 (RDH11), partial

Product Code	CSB-EP019523HU
Relevance	Exhibits an oxidoreductive catalytic activity towards retinoids. Most efficient as an NADPH-dependent retinal reductase. Displays high activity towards 9-cis and all-trans-retinol. Also involved in the metabolism of short-chain aldehydes. No steroid dehydrogenase activity detected.
Abbreviation	Recombinant Human RDH11 protein, partial
Storage	The shelf life is related to many factors, storage state, buffer ingredients, storage temperature and the stability of the protein itself. Generally, the shelf life of liquid form is 6 months at -20°C/-80°C. The shelf life of lyophilized form is 12 months at -20°C/-80°C.
Uniprot No.	Q8TC12
Alias	Androgen-regulated short-chain dehydrogenase/reductase 1HCV core-binding protein HCBP12;Prostate short-chain dehydrogenase/reductase 1Retinal reductase 1 ;RalR1Short chain dehydrogenase/reductase family 7C member 1
Product Type	Recombinant Protein
Immunogen Species	Homo sapiens (Human)
Purity	≥ 90% as determined by SDS-PAGE.
Sequence	PQIRKMLSSGVCTSTVQLPGKVVVVVTGANTGIGKETAKELAQRGARVYLACRD VEKGELVAKEIQTTTGNQQVLRKLDLSDTKSIRAFKAGFLAEEKHLHVLINNA GVMMCPYSKTADGFEMHIGVNHHLGHFLLTHLLLEKLKESAPSRIVNVSSLAHHL GRIHFHNLQGEKFYNAGLAYCHSKLANILFTQELARRLKGSGVTTYSVHPGTV QSELVRHSSFMRWMWWLFSFFIKTPQQGAQTSLHCALTEGLEILSGNHFSDC HVAWVSAQARNETIARRLWDVSCDLLGLPID
Research Area	Neuroscience
Source	E.coli
Target Names	RDH11
Expression Region	22-318aa
Notes	Repeated freezing and thawing is not recommended. Store working aliquots at 4°C for up to one week.
Tag Info	N-terminal 6xHis-SUMO-tagged
Mol. Weight	49.0kDa
Protein Length	Cytoplasmic Domain
Image	



(Tris-Glycine gel) Discontinuous SDS-PAGE (reduced) with 5% enrichment gel and 15% separation gel.

Reconstitution

We recommend that this vial be briefly centrifuged prior to opening to bring the contents to the bottom. Please reconstitute protein in deionized sterile water to a concentration of 0.1-1.0 mg/mL. We recommend to add 5-50% of glycerol (final concentration) and aliquot for long-term storage at -20°C/-80°C. Our default final concentration of glycerol is 50%. Customers could use it as reference.

Shelf Life

The shelf life is related to many factors, storage state, buffer ingredients, storage temperature and the stability of the protein itself. Generally, the shelf life of liquid form is 6 months at -20°C/-80°C. The shelf life of lyophilized form is 12 months at -20°C/-80°C.