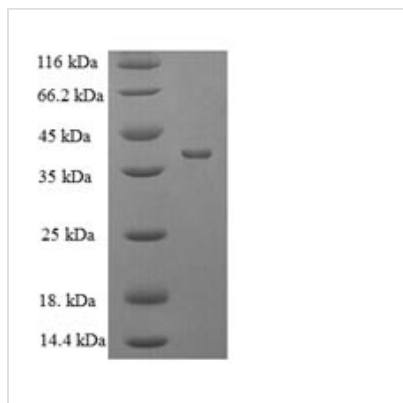




Recombinant Escherichia coli Protease 7 (ompT)

Product Code	CSB-EP357589ENV
Relevance	Protease that can cleave T7 RNA polymerase, ferric enterobactin receptor protein (FEP), antimicrobial peptide protamine and other proteins. This protease has a specificity for paired basic residues.
Abbreviation	Recombinant E.coli ompT protein
Storage	The shelf life is related to many factors, storage state, buffer ingredients, storage temperature and the stability of the protein itself. Generally, the shelf life of liquid form is 6 months at -20°C/-80°C. The shelf life of lyophilized form is 12 months at -20°C/-80°C.
Uniprot No.	P09169
Alias	OmpTOuter membrane protein 3BProtease AProtease VII
Product Type	Recombinant Protein
Immunogen Species	Escherichia coli (strain K12)
Purity	Greater than 90% as determined by SDS-PAGE.
Sequence	STETLSFTPDNINADISLGLTSGKTKERVYLAEEGGRKVSQLDWKFNNAIIKG AINWDLMPQISIGAAGWTTLGSRRGNMVDQDWMSSNPGTWTDESHPDT QLNYANEFDLNIKGWLLNEPNYRLGLMAGYQESRYSFTARGGSYIYSSEEGFR DDIGSFPNGERAIGYKQRFKMPYIGLTGSYRYEDFELGGTFKYSGWVSSDN DEHYDPGKRITYRSKVKDQNYYSVAVNAGYYVTPNAKVYVEGAWNRVTNKK GNTSLYDHNNNTSDYSKNGAGIENYNFITTAGLKYTF
Research Area	Others
Source	E.coli
Target Names	ompT
Expression Region	21-317aa
Notes	Repeated freezing and thawing is not recommended. Store working aliquots at 4°C for up to one week.
Tag Info	N-terminal 6xHis-tagged
Mol. Weight	37.5kDa
Protein Length	Full Length of Mature Protein
Image	



(Tris-Glycine gel) Discontinuous SDS-PAGE (reduced) with 5% enrichment gel and 15% separation gel.

Reconstitution

We recommend that this vial be briefly centrifuged prior to opening to bring the contents to the bottom. Please reconstitute protein in deionized sterile water to a concentration of 0.1-1.0 mg/mL. We recommend to add 5-50% of glycerol (final concentration) and aliquot for long-term storage at -20°C/-80°C. Our default final concentration of glycerol is 50%. Customers could use it as reference.

Shelf Life

The shelf life is related to many factors, storage state, buffer ingredients, storage temperature and the stability of the protein itself. Generally, the shelf life of liquid form is 6 months at -20°C/-80°C. The shelf life of lyophilized form is 12 months at -20°C/-80°C.