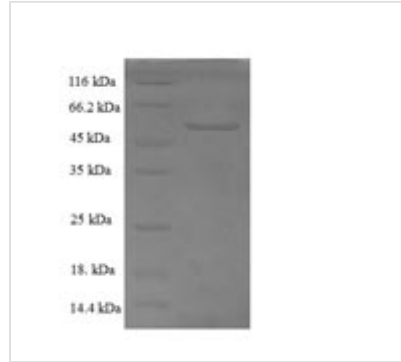




Recombinant Human Endoplasmic reticulum-Golgi intermediate compartment protein 3 (ERGIC3), partial

Product Code	CSB-EP896688HU
Relevance	Possible role in transport between endoplasmic reticulum and Golgi.
Abbreviation	Recombinant Human ERGIC3 protein, partial
Storage	The shelf life is related to many factors, storage state, buffer ingredients, storage temperature and the stability of the protein itself. Generally, the shelf life of liquid form is 6 months at -20°C/-80°C. The shelf life of lyophilized form is 12 months at -20°C/-80°C.
Uniprot No.	Q9Y282
Alias	Serologically defined breast cancer antigen NY-BR-84
Product Type	Recombinant Protein
Immunogen Species	Homo sapiens (Human)
Purity	≥ 90% as determined by SDS-PAGE.
Sequence	QYYLTTEVHPELYVDKSRGDKLKINIDVLFPHMPCAYLSIDAMDVAGEQQQLDVE HNLFKQRLDKDGIPVSSEAEERHELKVEVTVFDPDSLDPDRCESCYGAEAEEDI KCCNTCEDVREAYRRRGWAFKNPDTIEQCRREGFSQKMQEQQNEGCQVYG FLEVNVKVAGNFHFAPGKSFQQSHVHVHDLQSFGLDNINMTHYIQHLSFGEDYP GIVNPLDHTNVTAPQASMMFQYFVKVVPTVYMKVDGEVLRNQSFSVTRHEKV ANGLLDGQGLPGVFVLYELSPMMVKLTEKHRSF
Research Area	Transport
Source	E.coli
Target Names	ERGIC3
Expression Region	47-341aa
Notes	Repeated freezing and thawing is not recommended. Store working aliquots at 4°C for up to one week.
Tag Info	N-terminal 6xHis-SUMO-tagged
Mol. Weight	49.7kDa
Protein Length	Partial
Image	



(Tris-Glycine gel) Discontinuous SDS-PAGE (reduced) with 5% enrichment gel and 15% separation gel.

Reconstitution

We recommend that this vial be briefly centrifuged prior to opening to bring the contents to the bottom. Please reconstitute protein in deionized sterile water to a concentration of 0.1-1.0 mg/mL. We recommend to add 5-50% of glycerol (final concentration) and aliquot for long-term storage at -20°C/-80°C. Our default final concentration of glycerol is 50%. Customers could use it as reference.

Shelf Life

The shelf life is related to many factors, storage state, buffer ingredients, storage temperature and the stability of the protein itself.

Generally, the shelf life of liquid form is 6 months at -20°C/-80°C. The shelf life of lyophilized form is 12 months at -20°C/-80°C.