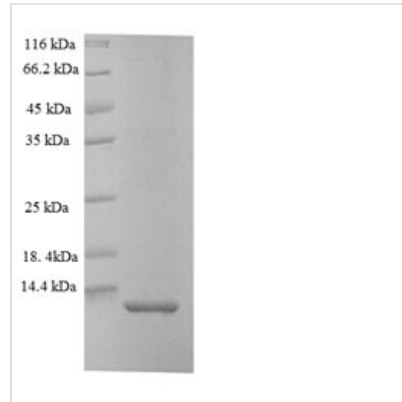




Recombinant Oncorhynchus mykiss Myelin proteolipid protein (plp), partial

Product Code	CSB-EP018202OEI
Relevance	This is the major myelin protein from the central nervous syst. It plays an important role in the formation or maintenance of the multilamellar structure of myelin. May be involved in neuron and glial cell differentiation.
Abbreviation	Recombinant Oncorhynchus mykiss Myelin proteolipid protein, partial
Storage	The shelf life is related to many factors, storage state, buffer ingredients, storage temperature and the stability of the protein itself. Generally, the shelf life of liquid form is 6 months at -20°C/-80°C. The shelf life of lyophilized form is 12 months at -20°C/-80°C.
Uniprot No.	P79826
Alias	DM20Lipophilin
Product Type	Recombinant Protein
Immunogen Species	Oncorhynchus mykiss (Rainbow trout) (Salmo gairdneri)
Purity	Greater than 90% as determined by SDS-PAGE.
Sequence	PSSSSLIWHRPATTSTSWTETTPSINQHGWICMDARQYGLLPWNAMPGKACG MTLASICKTKEFFVTYD
Research Area	Others
Source	E.coli
Target Names	plp
Expression Region	150-218aa
Notes	Repeated freezing and thawing is not recommended. Store working aliquots at 4°C for up to one week.
Tag Info	N-terminal 6xHis-tagged
Mol. Weight	11.7kDa
Protein Length	Extracellular Domain
Image	



(Tris-Glycine gel) Discontinuous SDS-PAGE (reduced) with 5% enrichment gel and 15% separation gel.

Reconstitution

We recommend that this vial be briefly centrifuged prior to opening to bring the contents to the bottom. Please reconstitute protein in deionized sterile water to a concentration of 0.1-1.0 mg/mL. We recommend to add 5-50% of glycerol (final concentration) and aliquot for long-term storage at -20°C/-80°C. Our default final concentration of glycerol is 50%. Customers could use it as reference.

Shelf Life

The shelf life is related to many factors, storage state, buffer ingredients, storage temperature and the stability of the protein itself. Generally, the shelf life of liquid form is 6 months at -20°C/-80°C. The shelf life of lyophilized form is 12 months at -20°C/-80°C.