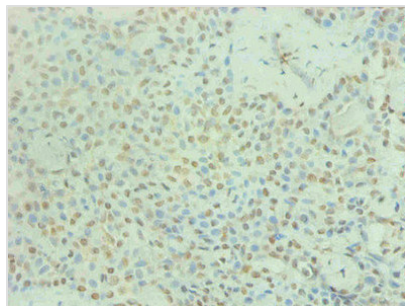




PRL Monoclonal Antibody

Product Code	CSB-MA0187241A0m
Storage	Upon receipt, store at -20°C or -80°C. Avoid repeated freeze.
Uniprot No.	P01236
Immunogen	Recombinant Human PRL
Raised In	mouse
Species Reactivity	Human
Specificity	specific for PRL native and denatured forms
Tested Applications	ELISA,IHC;Recommended dilution:IHC:1:50-1:500
Relevance	This gene encodes the anterior pituitary hormone prolactin. This secreted hormone is a growth regulator for many tissues, including cells of the immune system. It may also play a role in cell survival by suppressing apoptosis, and it is essential for lactation. Alternative splicing results in multiple transcript variants that encode the same protein.
Form	liquid
Conjugate	Non-conjugated
Storage Buffer	Preservative: 0.03% Proclin 300 Constituents: 50% Glycerol, 0.01M PBS, PH 7.4
Purification Method	>95%,protein G purified
Isotype	IgG1
Clonality	monoclonal
Alias	PRL
Product Type	Monoclonal Antibody
Immunogen Species	Homo sapiens (Human)
Gene Names	PRL
Clone No.	4A2B3

Image



Immunohistochemical of paraffin-embedded human breast cancer using CSB-MA0187241A0m at dilution of 1:200