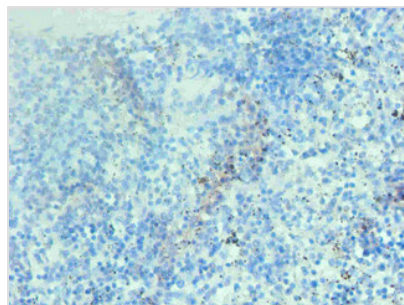




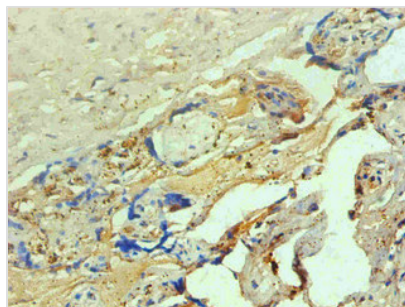
# Hemoglobin Monoclonal Antibody

<b>Product Code</b>	CSB-MA002401E0m
<b>Storage</b>	Upon receipt, store at -20°C or -80°C. Avoid repeated freeze.
<b>Immunogen</b>	Human Hemoglobin
<b>Raised In</b>	mouse
<b>Species Reactivity</b>	Human
<b>Specificity</b>	specific for Human Hemoglobin native forms
<b>Tested Applications</b>	ELISA,IHC;Recommended dilution:IHC:1:50-1:500
<b>Relevance</b>	Hemoglobin is involved in oxygen transport from the lung to the various peripheral tissues. The alpha (HBA) and beta (HBB) loci determine the structure of the 2 types of polypeptide chains in adult Hemoglobin. The normal adult Hemoglobin tetramer consists of two alpha chains and two beta chains. Mutant beta globin causes sickle cell anemia. Absence of beta chain causes beta zero thalassemia. Reduced amounts of detectable beta globin causes beta plus thalassemia.
<b>Form</b>	liquid
<b>Conjugate</b>	Non-conjugated
<b>Storage Buffer</b>	Preservative: 0.03% Proclin 300 Constituents: 50% Glycerol, 0.01M PBS, PH 7.4
<b>Purification Method</b>	>95%,protein G purified
<b>Isotype</b>	IgG1
<b>Clonality</b>	monoclonal
<b>Product Type</b>	Monoclonal Antibody
<b>Immunogen Species</b>	Homo sapiens (Human)
<b>Clone No.</b>	4A1B1

## Image



Immunohistochemical of paraffin-embedded human spleen tissue using CSB-MA002401E0m at dilution of 1:200



Immunohistochemical of paraffin-embedded human placenta tissue using CSB-MA002401E0m at dilution of 1:200