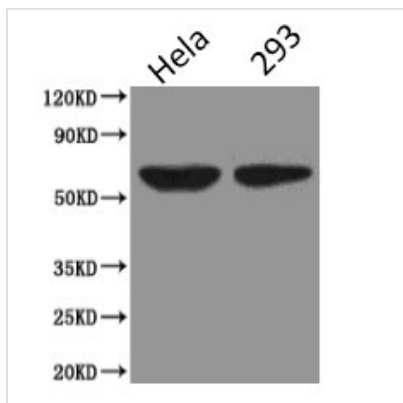




# PODXL Monoclonal Antibody

<b>Product Code</b>	CSB-MA134471A0m
<b>Storage</b>	Upon receipt, store at -20°C or -80°C. Avoid repeated freeze.
<b>Uniprot No.</b>	O00592
<b>Immunogen</b>	Recombinant Human PODXL protein
<b>Raised In</b>	Mouse
<b>Species Reactivity</b>	Human, Mouse, Rat
<b>Specificity</b>	Specific for PODXL denatured and native forms
<b>Tested Applications</b>	ELISA, WB, IHC, IP, IF, FC; Recommended dilution: WB:1:500-1:5000, IHC:1:50-1:500, IF:1:50-1:200, IP:1:200-1:2000
<b>Relevance</b>	Involved in the regulation of both adhesion and cell morphology and cancer progression. Function as an anti-adhesive molecule that maintains an open filtration pathway between neighboring foot processes in the podocyte by charge repulsion. Acts as a pro-adhesive molecule, enhancing the adherence of cells to immobilized ligands, increasing the rate of migration and cell-cell contacts in an integrin-dependent manner. Induces the formation of apical actin-dependent microvilli. Involved in the formation of a preapical plasma membrane subdomain to set up initial epithelial polarization and the apical lumen formation during renal tubulogenesis. Plays a role in cancer development and aggressiveness by inducing cell migration and invasion through its interaction with the actin-binding protein EZR. Affects EZR-dependent signaling events, leading to increased activities of the MAPK and PI3K pathways in cancer cells.
<b>Form</b>	Liquid
<b>Conjugate</b>	Non-conjugated
<b>Storage Buffer</b>	Preservative: 0.03% Proclin 300 Constituents: 50% Glycerol, 0.01M PBS, PH 7.4
<b>Purification Method</b>	>95%, Protein G purified
<b>Isotype</b>	IgG2b
<b>Clonality</b>	Monoclonal
<b>Alias</b>	Podocalyxin, GCTM-2 antigen, Gp200, Podocalyxin-like protein 1, PC, PCLP-1, PODXL, PCLP, PCLP1
<b>Product Type</b>	Monoclonal Antibody
<b>Immunogen Species</b>	Homo sapiens (Human)
<b>Clone No.</b>	4D2G7

**Image**



**Western Blot**

Positive WB detected in: HeLa whole cell lysate, HEK293 whole cell lysate

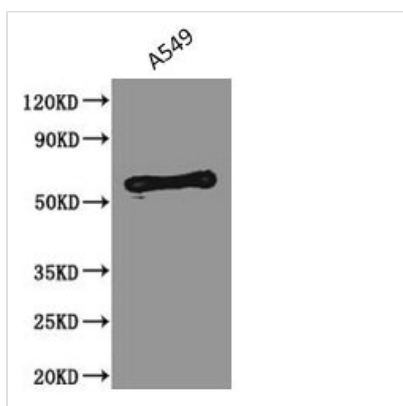
All lanes: PODXL antibody at 2.5µg/ml

Secondary

Goat polyclonal to Mouse IgG at 1/5000 dilution

Predicted band size: 59, 56 kDa

Observed band size: 59 kDa



**Western Blot**

Positive WB detected in: A549 whole cell lysate

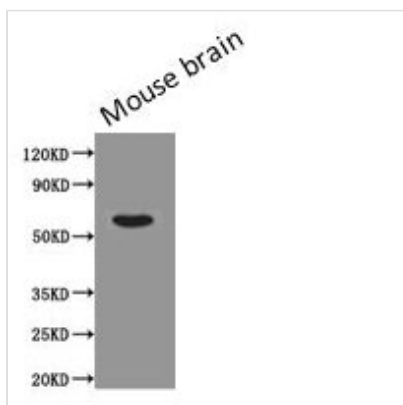
All lanes: PODXL antibody at 2.5µg/ml

Secondary

Goat polyclonal to Mouse IgG at 1/5000 dilution

Predicted band size: 59, 56 kDa

Observed band size: 59 kDa



**Western Blot**

Positive WB detected in: Mouse brain tissue

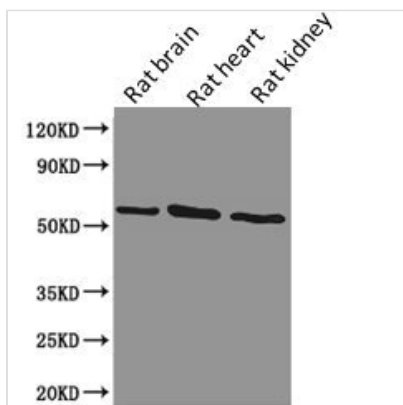
All lanes: PODXL antibody at 0.43µg/ml

Secondary

Goat polyclonal to Mouse IgG at 1/5000 dilution

Predicted band size: 59, 56 kDa

Observed band size: 59 kDa



**Western Blot**

Positive WB detected in: Rat brain tissue, Rat heart tissue, Rat kidney tissue

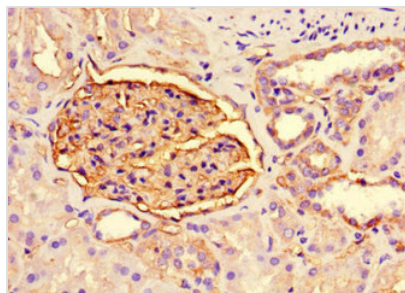
All lanes: PODXL antibody at 1.28µg/ml

Secondary

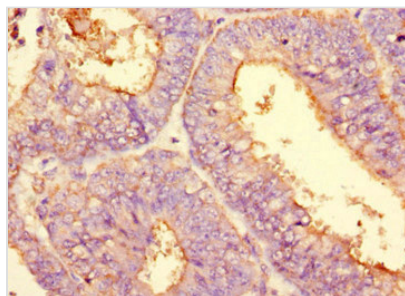
Goat polyclonal to Mouse IgG at 1/5000 dilution

Predicted band size: 59, 56 kDa

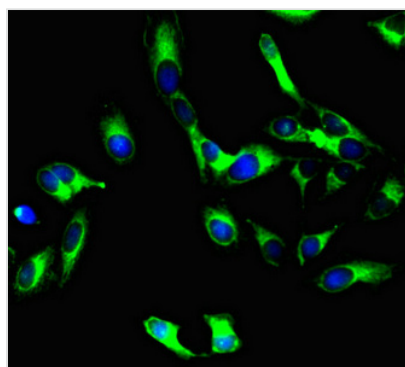
Observed band size: 59 kDa



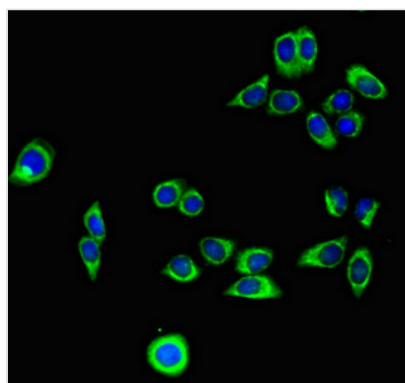
Immunohistochemistry of paraffin-embedded human kidney tissue using CSB-MA134471A0m at dilution of 1:200



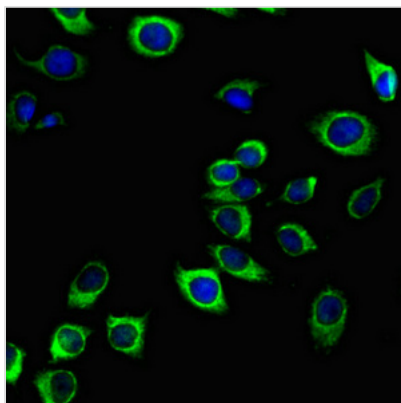
Immunohistochemistry of paraffin-embedded human melanoma using CSB-MA134471A0m at dilution of 1:200



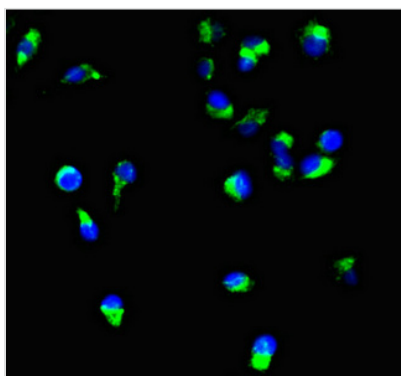
Immunofluorescent analysis of HeLa cells using CSB-MA134471A0m at a dilution of 1:100 and Alexa Fluor 488-conjugated AffiniPure Goat Anti-Mouse IgG(H+L).



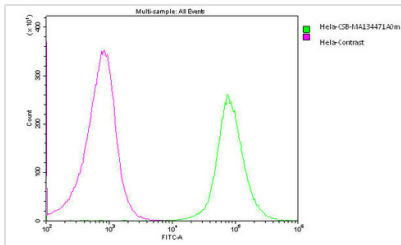
Immunofluorescent analysis of PC-3 cells using CSB-MA134471A0m at a dilution of 1:100 and Alexa Fluor 488-conjugated AffiniPure Goat Anti-Mouse IgG(H+L).



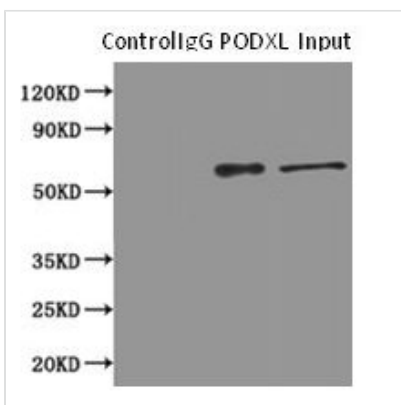
Immunofluorescent analysis of A549 cells using CSB-MA134471A0m at a dilution of 1:100 and Alexa Fluor 488-conjugated AffiniPure Goat Anti-Mouse IgG(H+L).



Immunofluorescent analysis of Ntera-2 cells using CSB-MA134471A0m at a dilution of 1:100 and Alexa Fluor 488-conjugated AffiniPure Goat Anti-Mouse IgG(H+L).



Overlay histogram showing HeLa cells stained with CSB-MA134471A0m (red line). The cells were fixed with 70% Ethylalcohol (18h) and then permeabilized with 0.3% Triton X-100 for 2 min. The cells were then incubated in 1x PBS /10% normal goat serum to block non-specific protein-protein interactions followed by the antibody (10µg/1\*10<sup>6</sup>cells) for 1 h at 4°C. The secondary antibody used was FITC goat anti-mouse IgG(H+L) at 1/200 dilution for 1 h at 4°C. Isotype control antibody (green line) was mouse IGg2b (10µg/1\*10<sup>6</sup>cells) used under the same conditions. Acquisition of >10,000 events was performed.



Immunoprecipitating PODXL in HEK293 whole cell lysate  
 Lane 1: Mouse control IgG (1µg) instead of CSB-MA134471A0m in HEK293 whole cell lysate. For western blotting, a HRP-conjugated Protein G antibody was used as the secondary antibody (1/2000)  
 Lane 2: CSB-MA134471A0m (8µg) + HEK293 whole cell lysate (500µg)  
 Lane 3: HEK293 whole cell lysate (10µg)

**Usage**

For Research Use Only. Not for use in diagnostic or therapeutic procedures.