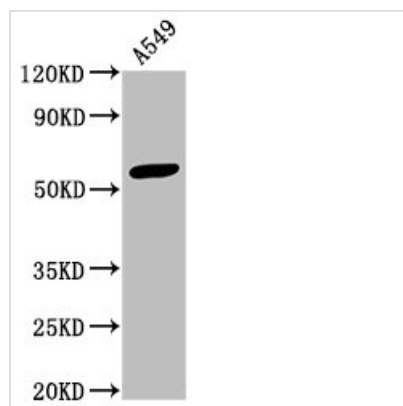




IFIT3 Antibody

| | |
|----------------------------|--|
| Product Code | CSB-PA011022HA01HU |
| Storage | Upon receipt, store at -20°C or -80°C. Avoid repeated freeze. |
| Uniprot No. | O14879 |
| Immunogen | Recombinant Human Interferon-induced protein with tetratricopeptide repeats 3 protein (1-490AA) |
| Raised In | Rabbit |
| Species Reactivity | Human |
| Tested Applications | ELISA, WB, IHC, IF, IP; Recommended dilution: WB:1:1000-1:5000, IHC:1:20-1:200, IF:1:50-1:500, IP:1:200-1:2000 |
| Form | Liquid |
| Conjugate | Non-conjugated |
| Storage Buffer | Preservative: 0.03% Proclin 300 Constituents: 50% Glycerol, 0.01M PBS, PH 7.4 |
| Purification Method | >95%, Protein G purified |
| Isotype | IgG |
| Clonality | Polyclonal |
| Alias | Interferon-induced protein with tetratricopeptide repeats 3 (IFIT-3) (CIG49) (ISG-60) (Interferon-induced 60 kDa protein) (IFI-60K) (Interferon-induced protein with tetratricopeptide repeats 4) (IFIT-4) (Retinoic acid-induced gene G protein) (P60) (RIG-G), IFIT3, CIG-49 IFI60 IFIT4 ISG60 |
| Immunogen Species | Homo sapiens (Human) |
| Research Area | Immunology |
| Target Names | IFIT3 |

Image



Western Blot

Positive WB detected in: A549 whole cell lysate

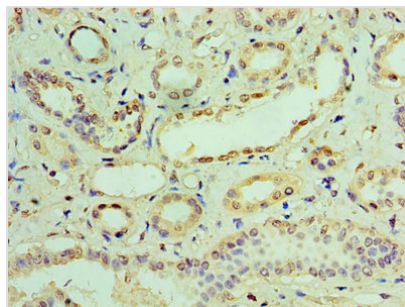
All lanes: IFIT3 antibody at 3.3µg/ml

Secondary

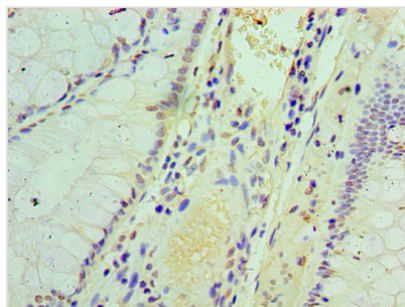
Goat polyclonal to rabbit IgG at 1/50000 dilution

Predicted band size: 56 kDa

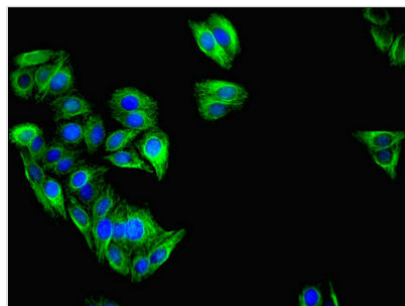
Observed band size: 56 kDa



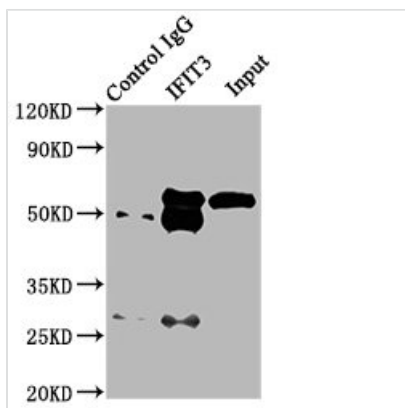
Immunohistochemistry of paraffin-embedded human kidney tissue using CSB-PA011022HA01HU at dilution of 1:100



Immunohistochemistry of paraffin-embedded human colon cancer using CSB-PA011022HA01HU at dilution of 1:100



Immunofluorescent analysis of HepG2 cells using CSB-PA011022HA01HU at dilution of 1:100 and Alexa Fluor 488-conjugated AffiniPure Goat Anti-Rabbit IgG(H+L)



Immunoprecipitating IFIT3 in HepG2 whole cell lysate
 Lane 1: Rabbit control IgG (1μg) instead of CSB-PA011022HA01HU in HepG2 whole cell lysate. For western blotting, a HRP-conjugated Protein G antibody was used as the secondary antibody (1/2000)
 Lane 2: CSB-PA011022HA01HU (6μg) + HepG2 whole cell lysate (500μg)
 Lane 3: HepG2 whole cell lysate (10μg)