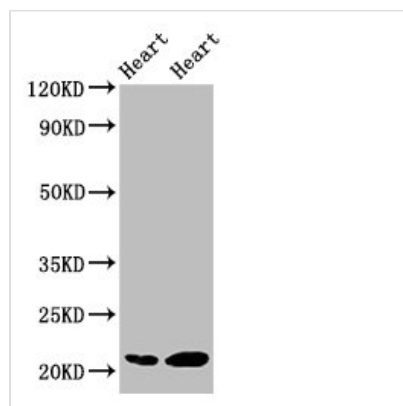




# CRYAB Antibody

<b>Product Code</b>	CSB-PA006008HA01HU
<b>Storage</b>	Upon receipt, store at -20°C or -80°C. Avoid repeated freeze.
<b>Uniprot No.</b>	P02511
<b>Immunogen</b>	Recombinant Human Alpha-crystallin B chain protein (1-175AA)
<b>Raised In</b>	Rabbit
<b>Species Reactivity</b>	Human, Mouse, Rat
<b>Tested Applications</b>	ELISA, WB, IHC, IF; Recommended dilution: WB:1:500-1:5000, IHC:1:200-1:500, IF:1:50-1:200
<b>Form</b>	Liquid
<b>Conjugate</b>	Non-conjugated
<b>Storage Buffer</b>	Preservative: 0.03% Proclin 300 Constituents: 50% Glycerol, 0.01M PBS, PH 7.4
<b>Purification Method</b>	>95%, Protein G purified
<b>Isotype</b>	IgG
<b>Clonality</b>	Polyclonal
<b>Alias</b>	Alpha-crystallin B chain (Alpha(B)-crystallin) (Heat shock protein beta-5) (HspB5) (Renal carcinoma antigen NY-REN-27) (Rosenthal fiber component), CRYAB, CRYA2 HSPB5
<b>Immunogen Species</b>	Homo sapiens (Human)
<b>Research Area</b>	Signal Transduction
<b>Target Names</b>	CRYAB

## Image



### Western Blot

Positive WB detected in: Rat heart tissue, Mouse heart tissue

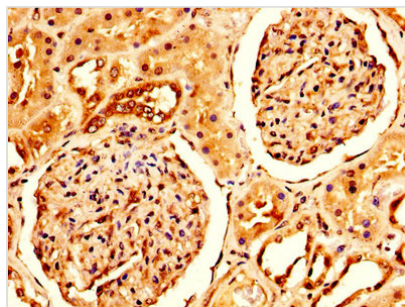
All lanes: CRYAB antibody at 2µg/ml

Secondary

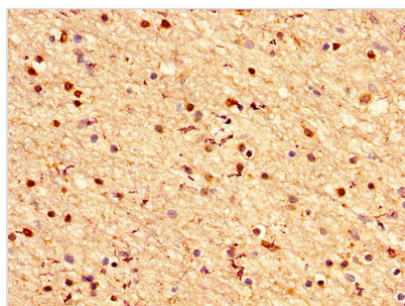
Goat polyclonal to rabbit IgG at 1/50000 dilution

Predicted band size: 21 kDa

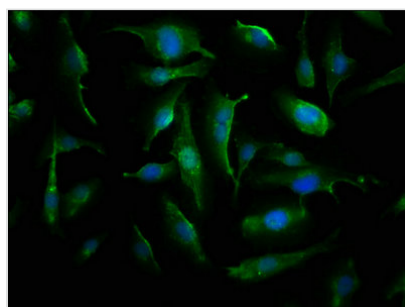
Observed band size: 21 kDa



IHC image of CSB-PA006008HA01HU diluted at 1:200 and staining in paraffin-embedded human kidney tissue performed on a Leica Bond™ system. After dewaxing and hydration, antigen retrieval was mediated by high pressure in a citrate buffer (pH 6.0). Section was blocked with 10% normal goat serum 30min at RT. Then primary antibody (1% BSA) was incubated at 4°C overnight. The primary is detected by a biotinylated secondary antibody and visualized using an HRP conjugated SP system.



IHC image of CSB-PA006008HA01HU diluted at 1:200 and staining in paraffin-embedded human brain tissue performed on a Leica Bond™ system. After dewaxing and hydration, antigen retrieval was mediated by high pressure in a citrate buffer (pH 6.0). Section was blocked with 10% normal goat serum 30min at RT. Then primary antibody (1% BSA) was incubated at 4°C overnight. The primary is detected by a biotinylated secondary antibody and visualized using an HRP conjugated SP system.



Immunofluorescence staining of U251 cells with CSB-PA006008HA01HU at 1:66, counter-stained with DAPI. The cells were fixed in 4% formaldehyde, permeabilized using 0.2% Triton X-100 and blocked in 10% normal Goat Serum. The cells were then incubated with the antibody overnight at 4°C. The secondary antibody was Alexa Fluor 488-conjugated AffiniPure Goat Anti-Rabbit IgG(H+L).

## Usage

For Research Use Only. Not for use in diagnostic or therapeutic procedures.