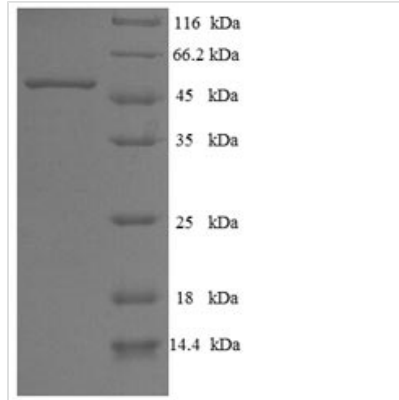




Recombinant Human L-aminoadipate-semialdehyde dehydrogenase-phosphopantetheinyl transferase (AASDHPPT)

Product Code	CSB-EP865121HU
Relevance	Catalyzes the post-translational modification of target proteins by phosphopantetheine. Can transfer the 4'-phosphopantetheine moiety from coenzyme A to a serine residue of a broad range of acceptors, such as the acyl carrier domain of FASN.
Abbreviation	Recombinant Human AASDHPPT protein
Storage	The shelf life is related to many factors, storage state, buffer ingredients, storage temperature and the stability of the protein itself. Generally, the shelf life of liquid form is 6 months at -20°C/-80°C. The shelf life of lyophilized form is 12 months at -20°C/-80°C.
Uniprot No.	Q9NRN7
Alias	4'-phosphopantetheinyl transferaseAlpha-aminoadipic semialdehyde dehydrogenase-phosphopantetheinyl transferase ;AASD-PPTLYS5 ortholog
Product Type	Recombinant Protein
Immunogen Species	Homo sapiens (Human)
Purity	Greater than 90% as determined by SDS-PAGE.
Sequence	MVFPAKRFCLVPSMEGVRWAFSCGTWLPSRAEWLLAVRSIQPEEKERIGQFV FARDAKAAMAGRLMIRKLVAEKLNIPWNHIRLQRTAKGKPVLAKDSSNPYPNF NFNISHQGDYAVLAAEPELQVGIDIMKTSFPGRGSIPFEFFHIMKRKFTNKEWETI RSFKDEWTQLDMFYRNWALKESFIKAIGVGLGFELQRLEFDLSPLNLDIGQVY KETRLFLDGEEEEKWAFEEESKIDEHHFVAVALRKPDGSRHQDVPSQDDSKPT QRQFTILNFNDLMSSAVPMTPEPSFWDCFCFTEEIPIRNGTKS
Research Area	Epigenetics and Nuclear Signaling
Source	E.coli
Target Names	AASDHPPT
Expression Region	1-309aa
Notes	Repeated freezing and thawing is not recommended. Store working aliquots at 4°C for up to one week.
Tag Info	N-terminal 6xHis-SUMO-tagged
Mol. Weight	51.8kDa
Protein Length	Full Length
Image	



(Tris-Glycine gel) Discontinuous SDS-PAGE (reduced) with 5% enrichment gel and 15% separation gel.

Reconstitution

We recommend that this vial be briefly centrifuged prior to opening to bring the contents to the bottom. Please reconstitute protein in deionized sterile water to a concentration of 0.1-1.0 mg/mL. We recommend to add 5-50% of glycerol (final concentration) and aliquot for long-term storage at $-20^{\circ}\text{C}/-80^{\circ}\text{C}$. Our default final concentration of glycerol is 50%. Customers could use it as reference.

Shelf Life

The shelf life is related to many factors, storage state, buffer ingredients, storage temperature and the stability of the protein itself. Generally, the shelf life of liquid form is 6 months at $-20^{\circ}\text{C}/-80^{\circ}\text{C}$. The shelf life of lyophilized form is 12 months at $-20^{\circ}\text{C}/-80^{\circ}\text{C}$.