

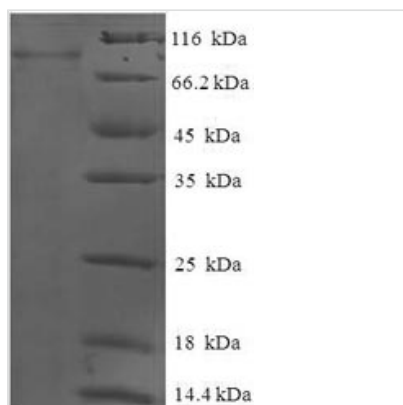


# Recombinant Human Glucokinase regulatory protein (GCKR)

<b>Product Code</b>	CSB-EP622767HU
<b>Relevance</b>	Inhibits glucokinase (GCK) by forming an inactive complex with this enzyme. The affinity of GCKR for GCK is modulated by fructose metabolites: GCKR with bound fructose 6-phosphate has increased affinity for GCK, while GCKR with bound fructose 1-phosphate has strongly decreased affinity for GCK and does not inhibit GCK activity.
<b>Abbreviation</b>	Recombinant Human GCKR protein
<b>Storage</b>	The shelf life is related to many factors, storage state, buffer ingredients, storage temperature and the stability of the protein itself. Generally, the shelf life of liquid form is 6 months at -20°C/-80°C. The shelf life of lyophilized form is 12 months at -20°C/-80°C.
<b>Uniprot No.</b>	Q14397
<b>Product Type</b>	Recombinant Protein
<b>Immunogen Species</b>	Homo sapiens (Human)
<b>Purity</b>	Greater than 90% as determined by SDS-PAGE.
<b>Sequence</b>	MPGTKRFQHVIVETPEPGKWELSGYEAAPVITEKSNPLTQDLKADAENIVRLLG QCDAEIFQEEGQALSTYQRLYSEILTTMVQVAGKVQEVLPDGGGLVVLSSG GTSGRMAFLMSVSNQLMKGLGQKPLYTYLIAGGDRSVVASREGTEDSALHG IEELKKVAAGKKRVIVIGISVGLSAPFVAGQMDCCMNNTAVFLPVLVGFNPVSM ARNDPIEDWSSTFRQVAERMQKMQEKQKAFVLNPAIGPEGLSGSSRMKGGG ATKILLETLLAAHKTVDQGIAASQRCLLEILRTFERAHQVTYSQSPKIATLMKSV STSLEKKGHVYLVGWQTLGIIAIMDGVCEIHTFGADFRDVRGFLIGDHSDFNFQ KAELTNQGPQFTFSQEDFLTSILPSLTEIDTVVFIFTLDDNLTEVQTTIVEQVKEKT NHIQALAHSTVGQTLPIPLKLFPSIISITWPLLFEEYEGNFIQKFQRELSTKWVL NTVSTGAHVLLGKILQNHMLDLRISNSKLFWRALAMLQRFSGQSKARCIESLLR AIHFPQPLSDDIRAAPISCHVQVAHEKEQVIPIALLSLLFRCSITEAQAHLAAAPS VCEAVRSALAGPGQKRTADPLEILEPDVQ
<b>Research Area</b>	Signal Transduction
<b>Source</b>	E.coli
<b>Target Names</b>	GCKR
<b>Expression Region</b>	1-625aa
<b>Notes</b>	Repeated freezing and thawing is not recommended. Store working aliquots at 4°C for up to one week.
<b>Tag Info</b>	N-terminal 6xHis-SUMO-tagged
<b>Mol. Weight</b>	84.7kDa
<b>Protein Length</b>	Full Length



## Image



(Tris-Glycine gel) Discontinuous SDS-PAGE (reduced) with 5% enrichment gel and 15% separation gel.

## Reconstitution

We recommend that this vial be briefly centrifuged prior to opening to bring the contents to the bottom. Please reconstitute protein in deionized sterile water to a concentration of 0.1-1.0 mg/mL. We recommend to add 5-50% of glycerol (final concentration) and aliquot for long-term storage at -20°C/-80°C. Our default final concentration of glycerol is 50%. Customers could use it as reference.

## Shelf Life

The shelf life is related to many factors, storage state, buffer ingredients, storage temperature and the stability of the protein itself.

Generally, the shelf life of liquid form is 6 months at -20°C/-80°C. The shelf life of lyophilized form is 12 months at -20°C/-80°C.