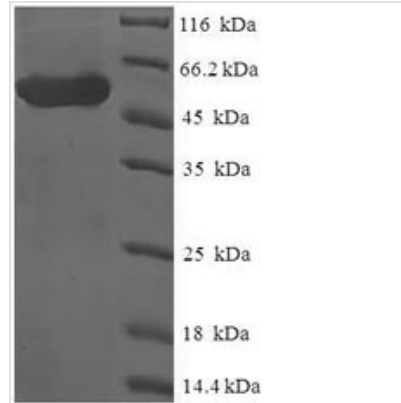




Recombinant Human Sex comb on midleg-like protein 4 (SCML4)

Product Code	CSB-EP839782HU
Relevance	Putative Polycomb group (PcG) protein. PcG proteins act by forming multiprotein complexes, which are required to maintain the transcriptionally repressive state of homeotic genes throughout development .
Abbreviation	Recombinant Human SCML4 protein
Storage	The shelf life is related to many factors, storage state, buffer ingredients, storage temperature and the stability of the protein itself. Generally, the shelf life of liquid form is 6 months at -20°C/-80°C. The shelf life of lyophilized form is 12 months at -20°C/-80°C.
Uniprot No.	Q8N228
Product Type	Recombinant Protein
Immunogen Species	Homo sapiens (Human)
Purity	≥ 90% as determined by SDS-PAGE.
Sequence	MPCQRTAWIGCDRQRTPPFHWREIKSRVLMTPLALSPPRSTPEPDLSSIPQDA ATVPSLAAPQALTVCLYINKQANAGPYLERKKVQQLPEHFGPERPSAVLQQAV QACIDCAHQKLVFSLVKQGYGGEMVSVSASF DGKQHLRSLPVVNSIGYVLR FLAKLCRSLLCDDLFSHQPFPRGCSASEKVQEKEEGRMESVKTVTTEEYLVNP VGMNRYSDVTSASTFNHRGSLHPSSSLYCKRQNSGDSHLGGGPAATAGGPR TSPMSSGGPSAPGLRPPASSPKRNTTSLEGNRCGNVMHASASH
Research Area	Transcription
Source	E.coli
Target Names	SCML4
Expression Region	1-305aa
Notes	Repeated freezing and thawing is not recommended. Store working aliquots at 4°C for up to one week.
Tag Info	N-terminal 6xHis-SUMO-tagged
Mol. Weight	49.0kDa
Protein Length	Full Length of Isoform 3
Image	



(Tris-Glycine gel) Discontinuous SDS-PAGE (reduced) with 5% enrichment gel and 15% separation gel.

Reconstitution

We recommend that this vial be briefly centrifuged prior to opening to bring the contents to the bottom. Please reconstitute protein in deionized sterile water to a concentration of 0.1-1.0 mg/mL. We recommend to add 5-50% of glycerol (final concentration) and aliquot for long-term storage at -20°C/-80°C. Our default final concentration of glycerol is 50%. Customers could use it as reference.

Shelf Life

The shelf life is related to many factors, storage state, buffer ingredients, storage temperature and the stability of the protein itself. Generally, the shelf life of liquid form is 6 months at -20°C/-80°C. The shelf life of lyophilized form is 12 months at -20°C/-80°C.