

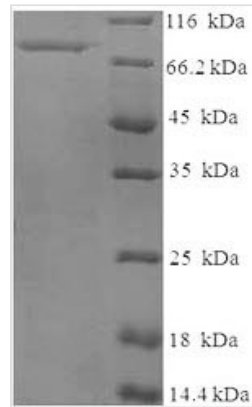


# Recombinant Human Tissue-type plasminogen activator (PLAT), partial

<b>Product Code</b>	CSB-EP018120HU
<b>Relevance</b>	Converts the abundant, but inactive, zymogen plasminogen to plasmin by hydrolyzing a single Arg-Val bond in plasminogen. By controlling plasmin-mediated proteolysis, it plays an important role in tissue remodeling and degradation, in cell migration and many other physiopathological events. Plays a direct role in facilitating neuronal migration.
<b>Abbreviation</b>	Recombinant Human PLAT protein, partial
<b>Storage</b>	The shelf life is related to many factors, storage state, buffer ingredients, storage temperature and the stability of the protein itself. Generally, the shelf life of liquid form is 6 months at -20°C/-80°C. The shelf life of lyophilized form is 12 months at -20°C/-80°C.
<b>Uniprot No.</b>	P00750
<b>Alias</b>	INN: AlteplaseINN: Reteplase
<b>Product Type</b>	Recombinant Protein
<b>Immunogen Species</b>	Homo sapiens (Human)
<b>Purity</b>	Greater than 90% as determined by SDS-PAGE.
<b>Sequence</b>	SYQVICRDEKTQMIYQQHQSWLRPVLRSNRVEYCWCNSGRAQCHSVPVKSC SEPRCFNNGGTCQQALYFSDVCQCPEGFAGKCCEIDTRATCYEDQGISYRGT WSTAESGAECTNWNSSALAQKPYSGRRPDAIRLGLGNHNYCRNPDRDSKPW CYVFKAGKYSSEFCSTPACSEGNSDCYFGNGSAYRGTHSLTESGASCLPWN SMILIGKVYTAQNPSAQUALGLGKHNYCRNPDGDAKPWCHVLKNRRLTWEYCD VPSCSTCGLRQYSQPQFRIKGGFLADIASHPWQAIAFAKHRRSPGERFLCGGI LISSCWILSAAHCFQERFPPHHLTVILGRTYRVVPGEEEEQKFEVEKYIVHKEFD DDTYDNDIALLQLKSDSSRCAQESSVVRTVCLPPADLQLPDWTECELSGYGK HEALSPFYSERLKEAHVRLYPSSRCTSQHLLNRTVTDNMLCAGDTRSGGPQA NLHDACQGDSGGPLVCLNDGRMTLVGIISWGLGCGQKDVPGVYTKVTNYLD WI
<b>Research Area</b>	Cancer
<b>Source</b>	E.coli
<b>Target Names</b>	PLAT
<b>Expression Region</b>	36-556aa
<b>Notes</b>	Repeated freezing and thawing is not recommended. Store working aliquots at 4°C for up to one week.
<b>Tag Info</b>	N-terminal 6xHis-SUMO-tagged
<b>Mol. Weight</b>	74.3kDa
<b>Protein Length</b>	Partial



## Image



(Tris-Glycine gel) Discontinuous SDS-PAGE (reduced) with 5% enrichment gel and 15% separation gel.

## Reconstitution

We recommend that this vial be briefly centrifuged prior to opening to bring the contents to the bottom. Please reconstitute protein in deionized sterile water to a concentration of 0.1-1.0 mg/mL. We recommend to add 5-50% of glycerol (final concentration) and aliquot for long-term storage at -20°C/-80°C. Our default final concentration of glycerol is 50%. Customers could use it as reference.

## Shelf Life

The shelf life is related to many factors, storage state, buffer ingredients, storage temperature and the stability of the protein itself.

Generally, the shelf life of liquid form is 6 months at -20°C/-80°C. The shelf life of lyophilized form is 12 months at -20°C/-80°C.