

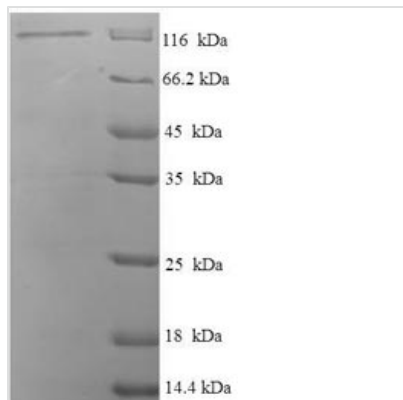


Recombinant Rat Disks large homolog 3 (Dlg3)

Product Code	CSB-EP717292RA
Relevance	Required for learning most likely through its role in synaptic plasticity following NMDA receptor signaling.
Abbreviation	Recombinant Rat Dlg3 protein
Storage	The shelf life is related to many factors, storage state, buffer ingredients, storage temperature and the stability of the protein itself. Generally, the shelf life of liquid form is 6 months at -20°C/-80°C. The shelf life of lyophilized form is 12 months at -20°C/-80°C.
Uniprot No.	Q62936
Alias	PSD-95/SAP90-related protein 1; Synapse-associated protein 102 ;SAP-102 ;SAP102
Product Type	Recombinant Protein
Immunogen Species	Rattus norvegicus (Rat)
Purity	≥ 90% as determined by SDS-PAGE.
Sequence	MHKHQHCCKCECYEVTRLAALRRLEPPGYGDWQVPDPYGPSSGNGASSG YGGYSSQTLPSQAGATPTPRTKAKLIPTGRDVGVPVPPKVPVGKNTPKLNGSG PSWWPECTCTNRDWYEQASPAPLLVNPEALEPSLSVNGSDGMFKYEEIVLER GNSGLGFSIAGGIDNPHVPDDPGIFITKIIPGGAAAMDGRLGVNDCVLRVNEVD VSEVVHSRAVEALKEAGPVVRLVRRRQPPPETIMEVNLLKGPGLGFSIAGGI GNQHIPGDNSIYITKIIEGGAAQKDGRLQIGDRLLAVNNTNLQDVRHEEAVASLK NTSDMVYLKVAKPGSLHLNDMYAPPDYASTFTALADNHISHNSSLGYLGAIVES KVTPAPPQVPTRYSPPIRHM LAEEDFTREPRKIILHKGSTGLGFNIVGGEDG EGIFVSFILAGGPADLSGELRRGDRILSVNGVNLRNATHEQAAAALKRAGQSVT IVAQYRPEEYSRFESKIHDLREQMMNSSMSSGSGSLRTSEKRSLYVRALFDYD RTRDSCPLSQGLSFSYGDILHVINASDDEWWQARLVTPHGESEQIGVIPSKKR VEKKERARLKTVKFHARTGMIESNRDFPGLSDDYYGAKNLKGVTSNTSDSESS SKGQEDAILS YEPVTRQEIH YARPVILGPMKDRVNDLISEFPHKFGSCVPHTT RPRRDNEVDGQDYHFVVSREQMEKDIQDNKFI EAGQFNDNLYGTSIQSVRAV AERGKHCILDVSGNAIKRLQQAQLYPIAIFIKPKSIEALMEMNRRQT YEQANKIF DKAMKLEQEFGEYFTAIVQGDSLEEIYNKIKQIIEDQSGHYIWWPSPEKL
Research Area	Others
Source	E.coli
Target Names	Dlg3
Expression Region	1-849aaaa
Notes	Repeated freezing and thawing is not recommended. Store working aliquots at 4°C for up to one week.
Tag Info	N-terminal GST-tagged
Mol. Weight	120.5kDa

**Protein Length**

Full Length

Image

(Tris-Glycine gel) Discontinuous SDS-PAGE (reduced) with 5% enrichment gel and 15% separation gel.

Reconstitution

We recommend that this vial be briefly centrifuged prior to opening to bring the contents to the bottom. Please reconstitute protein in deionized sterile water to a concentration of 0.1-1.0 mg/mL. We recommend to add 5-50% of glycerol (final concentration) and aliquot for long-term storage at -20°C/-80°C. Our default final concentration of glycerol is 50%. Customers could use it as reference.

Shelf Life

The shelf life is related to many factors, storage state, buffer ingredients, storage temperature and the stability of the protein itself. Generally, the shelf life of liquid form is 6 months at -20°C/-80°C. The shelf life of lyophilized form is 12 months at -20°C/-80°C.