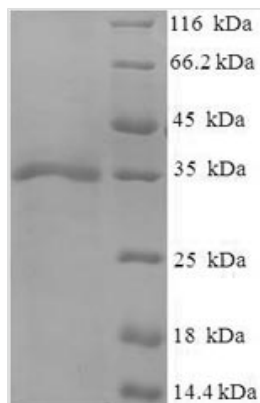




Recombinant Human cytomegalovirus Envelope glycoprotein H (gH), partial

Product Code	CSB-EP319015HWV
Relevance	The heterodimer glycoprotein H-glycoprotein L is required for the fusion of viral and plasma mbranes leading to virus entry into the host cell. Mbrane fusion is mediated by the fusion machinery composed at least of gB and the heterodimer gH/gL . Fusion of with fibroblasts requires the additional receptor-binding protein gO, which forms a complex with gH/gL.
Abbreviation	Recombinant Human cytomegalovirus gH protein, partial
Storage	The shelf life is related to many factors, storage state, buffer ingredients, storage temperature and the stability of the protein itself. Generally, the shelf life of liquid form is 6 months at -20°C/-80°C. The shelf life of lyophilized form is 12 months at -20°C/-80°C.
Uniprot No.	P12824
Product Type	Recombinant Protein
Immunogen Species	Human cytomegalovirus (strain AD169) (HHV-5) (HCMV)
Purity	Greater than 90% as determined by SDS-PAGE.
Sequence	RYGADAASEALDPHAFHLLLNTYGRPIRFLRENTTQCTYNSSLRNSTVVRENAI SFNFFQSYNQYYVFHMPRCLFAGPLAEQFLNQVDLTETLERYQQRLNTYALVS KDLASYRSFSQQLKAQDSLQGGQPTTVPPPIDLSIPHVWMPPTTPHDKWKGSH TTSGLHRPHFNQT
Research Area	Others
Source	E.coli
Target Names	gH
Expression Region	24-195aa
Notes	Repeated freezing and thawing is not recommended. Store working aliquots at 4°C for up to one week.
Tag Info	N-terminal 6xHis-SUMO-tagged
Mol. Weight	35.8 kDa
Protein Length	Partial
Image	



(Tris-Glycine gel) Discontinuous SDS-PAGE (reduced) with 5% enrichment gel and 15% separation gel.

Reconstitution

We recommend that this vial be briefly centrifuged prior to opening to bring the contents to the bottom. Please reconstitute protein in deionized sterile water to a concentration of 0.1-1.0 mg/mL. We recommend to add 5-50% of glycerol (final concentration) and aliquot for long-term storage at -20°C/-80°C. Our default final concentration of glycerol is 50%. Customers could use it as reference.

Shelf Life

The shelf life is related to many factors, storage state, buffer ingredients, storage temperature and the stability of the protein itself. Generally, the shelf life of liquid form is 6 months at -20°C/-80°C. The shelf life of lyophilized form is 12 months at -20°C/-80°C.