

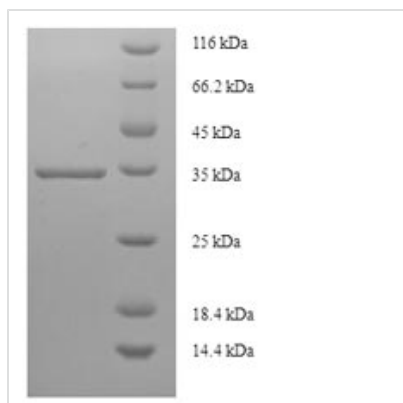


# Recombinant Human Prostaglandin-H2 D-isomerase (PTGDS)

<b>Product Code</b>	CSB-EP018969HU
<b>Relevance</b>	Catalyzes the conversion of PGH2 to PGD2, a prostaglandin involved in smooth muscle contraction/relaxation and a potent inhibitor of platelet aggregation. Involved in a variety of CNS functions, such as sedation, NR sleep and PGE2-induced allodynia, and may have an anti-apoptotic role in oligodendrocytes. Binds small non-substrate lipophilic molecules, including biliverdin, bilirubin, retinal, retinoic acid and thyroid hormone, and may act as a scavenger for harmful hydrophobic molecules and as a secretory retinoid and thyroid hormone transporter. Possibly involved in development and maintenance of the blood-brain, blood-retina, blood-aqueous humor and blood-testis barrier. It is likely to play important roles in both maturation and maintenance of the central nervous system and male reproductive system.
<b>Abbreviation</b>	Recombinant Human PTGDS protein
<b>Storage</b>	The shelf life is related to many factors, storage state, buffer ingredients, storage temperature and the stability of the protein itself. Generally, the shelf life of liquid form is 6 months at -20°C/-80°C. The shelf life of lyophilized form is 12 months at -20°C/-80°C.
<b>Uniprot No.</b>	P41222
<b>Alias</b>	Beta-trace protein;Cerebrin-28Glutathione-independent PGD synthaseLipocalin-type prostaglandin-D synthaseProstaglandin-D2 synthase ;PGD2 synthase ;PGDS ;PGDS2
<b>Product Type</b>	Recombinant Protein
<b>Immunogen Species</b>	Homo sapiens (Human)
<b>Purity</b>	Greater than 90% as determined by SDS-PAGE.
<b>Sequence</b>	APEAQVSVQPNFQQDKFLGRWFSAGLASNSSWLREKKAALSMCKSVVAPAT DGGLNLTSTFLRKNQCETRTMLLQPAGSLGSSYRSPHWGSTYSVSVVETDY DQYALLYSQGSKGPGEDFRMATLYSRTQTPRAELKEKFTAFCKAQQGFTEDTIV FLPQTDKCMTEQ
<b>Research Area</b>	Metabolism
<b>Source</b>	E.coli
<b>Target Names</b>	PTGDS
<b>Expression Region</b>	23-190aa
<b>Notes</b>	Repeated freezing and thawing is not recommended. Store working aliquots at 4°C for up to one week.
<b>Tag Info</b>	N-terminal 6xHis-SUMO-tagged
<b>Mol. Weight</b>	34.7kDa

**Protein Length**

Full Length of Mature Protein

**Image**

(Tris-Glycine gel) Discontinuous SDS-PAGE (reduced) with 5% enrichment gel and 15% separation gel.

**Reconstitution**

We recommend that this vial be briefly centrifuged prior to opening to bring the contents to the bottom. Please reconstitute protein in deionized sterile water to a concentration of 0.1-1.0 mg/mL. We recommend to add 5-50% of glycerol (final concentration) and aliquot for long-term storage at -20°C/-80°C. Our default final concentration of glycerol is 50%. Customers could use it as reference.

**Shelf Life**

The shelf life is related to many factors, storage state, buffer ingredients, storage temperature and the stability of the protein itself. Generally, the shelf life of liquid form is 6 months at -20°C/-80°C. The shelf life of lyophilized form is 12 months at -20°C/-80°C.