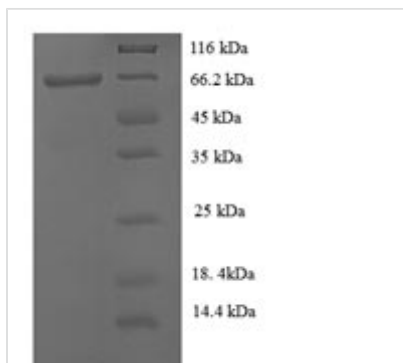




Recombinant Human Keratin, type I cuticular Ha8 (KRT38)

Product Code	CSB-EP012554HU
Abbreviation	Recombinant Human KRT38 protein
Storage	The shelf life is related to many factors, storage state, buffer ingredients, storage temperature and the stability of the protein itself. Generally, the shelf life of liquid form is 6 months at -20°C/-80°C. The shelf life of lyophilized form is 12 months at -20°C/-80°C.
Uniprot No.	O76015
Alias	Hair keratin, type I Ha8Keratin-38 ;K38
Product Type	Recombinant Protein
Immunogen Species	Homo sapiens (Human)
Purity	Greater than 90% as determined by SDS-PAGE.
Sequence	TSSYSSSSCPLGCTMAPGARNVSVSPIDIGCQPGAANIAPMCLLANVAHANR VRVGSTPLGRPSLCLPPTHTACPLPGTCHIPGNIGICGAYGENTLNGHEKET MQFLNDRLANYLEKVRQLEQENAELEATLLERSKCHESTVCPDYQSYFHTEE LQQKILCSKAENARLIVQIDNAKLAADDFRIKLESERSLRQLVEADKCGTQKLLD DATLAKADLEAQQESLKEEQLSLKSNEHEQEVKILRSQLEKLRIELDIEPTIDLN RVLGEMRAQYEAMLETNRQDVEQWFQAQSEGISLQDMSCSEELQCCQSEIL ELRCTVNALEVERQAQHTLKDCLQNSLCEAEDRFGTELAQMQLISNVEEQLS EIRADLERQNQEYQVLLDVKTRLENEIATYRNLLSESDCKLPCNPCSTSPSCVT APCAPRPSCGPCTTCGPTCGASTTGSRF
Research Area	Signal Transduction
Source	E.coli
Target Names	KRT38
Expression Region	2-456aa
Notes	Repeated freezing and thawing is not recommended. Store working aliquots at 4°C for up to one week.
Tag Info	N-terminal 6xHis-SUMO-tagged
Mol. Weight	66.3kDa
Protein Length	Full Length of Mature Protein
Image	



(Tris-Glycine gel) Discontinuous SDS-PAGE (reduced) with 5% enrichment gel and 15% separation gel.

Reconstitution

We recommend that this vial be briefly centrifuged prior to opening to bring the contents to the bottom. Please reconstitute protein in deionized sterile water to a concentration of 0.1-1.0 mg/mL. We recommend to add 5-50% of glycerol (final concentration) and aliquot for long-term storage at -20°C/-80°C. Our default final concentration of glycerol is 50%. Customers could use it as reference.

Shelf Life

The shelf life is related to many factors, storage state, buffer ingredients, storage temperature and the stability of the protein itself. Generally, the shelf life of liquid form is 6 months at -20°C/-80°C. The shelf life of lyophilized form is 12 months at -20°C/-80°C.