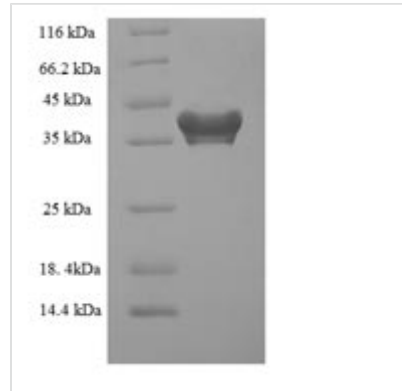




Recombinant Human Programmed cell death protein 10 (PDCD10)

Product Code	CSB-EP861141HU
Relevance	Promotes cell proliferation. Modulates apoptotic pathways. Increases mitogen-activated protein kinase activity and STK26 activity. Important for cell migration, and for normal structure and assembly of the Golgi complex. Important for KDR/VEGFR2 signaling. Increases the stability of KDR/VEGFR2 and prevents its breakdown. Required for normal cardiovascular development. Required for normal angiogenesis, vasculogenesis and hematopoiesis during embryonic development .
Abbreviation	Recombinant Human PDCD10 protein
Storage	The shelf life is related to many factors, storage state, buffer ingredients, storage temperature and the stability of the protein itself. Generally, the shelf life of liquid form is 6 months at -20°C/-80°C. The shelf life of lyophilized form is 12 months at -20°C/-80°C.
Uniprot No.	Q9BUL8
Alias	Cerebral cavernous malformations 3 protein;TF-1 cell apoptosis-related protein 15
Product Type	Recombinant Protein
Immunogen Species	Homo sapiens (Human)
Purity	Greater than 90% as determined by SDS-PAGE.
Sequence	MRMTMEEMKNEAETTSMVSMPLYAVMYPVFNELERVNLSAAQTLRAAFIKAE KENPGLTQDIIMKILEKKSVEVNFTESSLRMAADDVEEYMIERPEPEFQDLNEK ARALKQILSKIPDEINDRVRFLQTIKDIASAIKELLDTVNNVFKKYQYQNRRALEH QKKEFVKYSKSFSDTLKTYFKDYGKAINVFVSANRLIHQTNLILQTFKTVA
Research Area	Signal Transduction
Source	E.coli
Target Names	PDCD10
Expression Region	1-212aa
Notes	Repeated freezing and thawing is not recommended. Store working aliquots at 4°C for up to one week.
Tag Info	N-terminal 6xHis-SUMO-tagged
Mol. Weight	40.7kDa
Protein Length	Full Length
Image	



(Tris-Glycine gel) Discontinuous SDS-PAGE (reduced) with 5% enrichment gel and 15% separation gel.

Reconstitution

We recommend that this vial be briefly centrifuged prior to opening to bring the contents to the bottom. Please reconstitute protein in deionized sterile water to a concentration of 0.1-1.0 mg/mL. We recommend to add 5-50% of glycerol (final concentration) and aliquot for long-term storage at -20°C/-80°C. Our default final concentration of glycerol is 50%. Customers could use it as reference.

Shelf Life

The shelf life is related to many factors, storage state, buffer ingredients, storage temperature and the stability of the protein itself.

Generally, the shelf life of liquid form is 6 months at -20°C/-80°C. The shelf life of lyophilized form is 12 months at -20°C/-80°C.