

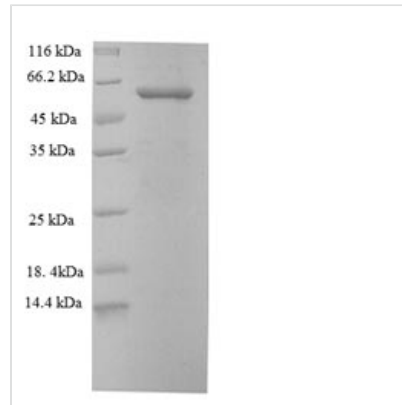


Recombinant Human Keratin, type II cytoskeletal 6A (KRT6A)

Product Code	CSB-EP012561HU
Relevance	Epidermis-specific type I keratin involved in wound healing. Involved in the activation of follicular keratinocytes after wounding, while it does not play a major role in keratinocyte proliferation or migration. Participates in the regulation of epithelial migration by inhibiting the activity of SRC during wound repair.
Abbreviation	Recombinant Human KRT6A protein
Storage	The shelf life is related to many factors, storage state, buffer ingredients, storage temperature and the stability of the protein itself. Generally, the shelf life of liquid form is 6 months at -20°C/-80°C. The shelf life of lyophilized form is 12 months at -20°C/-80°C.
Uniprot No.	P02538
Alias	Cytokeratin-6A ;CK-6ACytokeratin-6D ;CK-6DKeratin-6A ;K6AType-II keratin Kb6Allergen: Hom s 5
Product Type	Recombinant Protein
Immunogen Species	Homo sapiens (Human)
Purity	Greater than 90% as determined by SDS-PAGE.
Sequence	ASTSTTIRSHSSRRGFSANSARLPGVSRSGFSSVSVSRSRGSGGLGGACGG AGFGSRSLYGLGGSKRISIGGGSCAISGGYGSRAGGSYGFGGAGSGFGFGG GAGIGFGLGGGAGLAGGFGGPGFPVCPGGIQEVTVNQSLTPLNLQIDPTIQ RVRAEEREQIKTLNKFASFIDKVRFLQKQNKVLETKWTLQEQGKTQVTRQNL EPLFEQYINNLRRQLDSIVGERGRLDSELRGMQDLVEDFKNKYEDEINKRTAA ENEFVTLKKDVDAAYMKNKVELQAKADTLTDEINFLRALYDAELSQMQTHISDTS VVLSDMNNRNLDLDSIIAEVKAQYEEIAQRSRAEAEESWYQTKYEELQVTAGRH GDDLNRNTKQEI AEINRMIQRLRSEIDHVKKQCANLQAAIADAEQRGEMALKDAK NKLEGLDALQKAKQDLARLLKEYQELMNVKLALDVEIATYRKLLEGEECRLN GEGVGQVNISVVQSTVSSGYGGASGVGSGGLGLGGGSSYSYGSGLGVGGGFS SSSGRAIGGGLSSVGGGSSTIKYTTTSSSSRKSYPKH
Research Area	Signal Transduction
Source	E.coli
Target Names	KRT6A
Expression Region	2-564aa
Notes	Repeated freezing and thawing is not recommended. Store working aliquots at 4°C for up to one week.
Tag Info	N-terminal 6xHis-tagged
Mol. Weight	63.9kDa
Protein Length	Full Length of Mature Protein



Image



(Tris-Glycine gel) Discontinuous SDS-PAGE (reduced) with 5% enrichment gel and 15% separation gel.

Reconstitution

We recommend that this vial be briefly centrifuged prior to opening to bring the contents to the bottom. Please reconstitute protein in deionized sterile water to a concentration of 0.1-1.0 mg/mL. We recommend to add 5-50% of glycerol (final concentration) and aliquot for long-term storage at -20°C/-80°C. Our default final concentration of glycerol is 50%. Customers could use it as reference.

Shelf Life

The shelf life is related to many factors, storage state, buffer ingredients, storage temperature and the stability of the protein itself.

Generally, the shelf life of liquid form is 6 months at -20°C/-80°C. The shelf life of lyophilized form is 12 months at -20°C/-80°C.