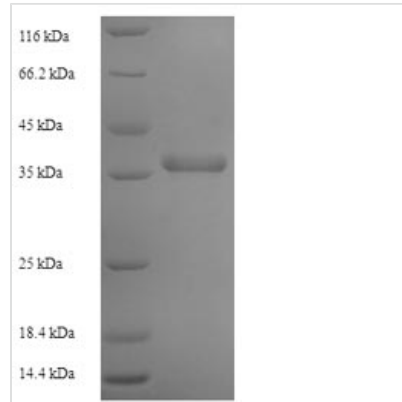




Recombinant Human DNA replication complex GINS protein PSF2 (GINS2)

Product Code	CSB-EP896481HU
Relevance	The GINS complex plays an essential role in the initiation of DNA replication, and progression of DNA replication forks. GINS complex ses to bind preferentially to single-stranded DNA.
Abbreviation	Recombinant Human GINS2 protein
Storage	The shelf life is related to many factors, storage state, buffer ingredients, storage temperature and the stability of the protein itself. Generally, the shelf life of liquid form is 6 months at -20°C/-80°C. The shelf life of lyophilized form is 12 months at -20°C/-80°C.
Uniprot No.	Q9Y248
Alias	GINS complex subunit 2
Product Type	Recombinant Protein
Immunogen Species	Homo sapiens (Human)
Purity	≥ 90% as determined by SDS-PAGE.
Sequence	MDAAEVEFLAEKELVTIIPNFSLDKIYLIGGDLGPFNPGLPVEVPLWLAINLKQR QKCRLLPPEWMDVEKLEKMRDHERKEETFTPMPSPYYMELTKLLLNHASDNI PKADEIRTLVKDMWDTRIAKLRVSADSFVRQQEAHAKLDNLTLMINTSGTFLT QALNHMYKLRTNLQPLESTQSQDF
Research Area	Transcription
Source	E.coli
Target Names	GINS2
Expression Region	1-185aa
Notes	Repeated freezing and thawing is not recommended. Store working aliquots at 4°C for up to one week.
Tag Info	N-terminal 6xHis-SUMO-tagged
Mol. Weight	37.4kDa
Protein Length	Full Length
Image	



(Tris-Glycine gel) Discontinuous SDS-PAGE (reduced) with 5% enrichment gel and 15% separation gel.

Reconstitution

We recommend that this vial be briefly centrifuged prior to opening to bring the contents to the bottom. Please reconstitute protein in deionized sterile water to a concentration of 0.1-1.0 mg/mL. We recommend to add 5-50% of glycerol (final concentration) and aliquot for long-term storage at -20°C/-80°C. Our default final concentration of glycerol is 50%. Customers could use it as reference.

Shelf Life

The shelf life is related to many factors, storage state, buffer ingredients, storage temperature and the stability of the protein itself. Generally, the shelf life of liquid form is 6 months at -20°C/-80°C. The shelf life of lyophilized form is 12 months at -20°C/-80°C.