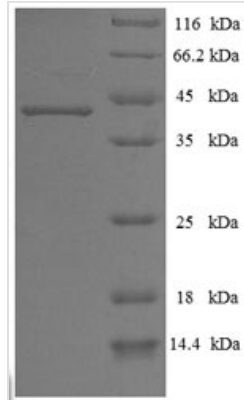




Recombinant Human Chymotrypsin-like elastase family member 3A (CELA3A)

Product Code	CSB-EP007588HU
Relevance	Efficient protease with alanine specificity but only little elastolytic activity.
Abbreviation	Recombinant Human CELA3A protein
Storage	The shelf life is related to many factors, storage state, buffer ingredients, storage temperature and the stability of the protein itself. Generally, the shelf life of liquid form is 6 months at -20°C/-80°C. The shelf life of lyophilized form is 12 months at -20°C/-80°C.
Uniprot No.	P09093
Alias	Elastase IIIA;Elastase-3A;Protease E
Product Type	Recombinant Protein
Immunogen Species	Homo sapiens (Human)
Purity	Greater than 90% as determined by SDS-PAGE.
Sequence	VVHGEDAVPYSWPWQVSLQYEKSGSFYHTCGGSLIAPDWVVTAGHCISRDLT YQVVLGEYNLAVKEGPEQVIPINSEELFVHPLWNRSCVACGNDIALIKLSRSAQ LGDAVQLASLPPAGDILPNKTPCYITGWGRLYTNGPLPDKLQQARLPVVDYKH CSRWNWWGSTVKKTMVCAGGYIRSGCNGDSGGPLNCPTEDGGWQVHGVT SFVSAFGCNFIWKPTVFTRVSAFIDWIEETIASH
Research Area	Cell Biology
Source	E.coli
Target Names	CELA3A
Expression Region	29-270aa
Notes	Repeated freezing and thawing is not recommended. Store working aliquots at 4°C for up to one week.
Tag Info	N-terminal 6xHis-SUMO-tagged
Mol. Weight	42.6kDa
Protein Length	Full Length of Mature Protein
Image	



(Tris-Glycine gel) Discontinuous SDS-PAGE (reduced) with 5% enrichment gel and 15% separation gel.

Reconstitution

We recommend that this vial be briefly centrifuged prior to opening to bring the contents to the bottom. Please reconstitute protein in deionized sterile water to a concentration of 0.1-1.0 mg/mL. We recommend to add 5-50% of glycerol (final concentration) and aliquot for long-term storage at -20°C/-80°C. Our default final concentration of glycerol is 50%. Customers could use it as reference.

Shelf Life

The shelf life is related to many factors, storage state, buffer ingredients, storage temperature and the stability of the protein itself. Generally, the shelf life of liquid form is 6 months at -20°C/-80°C. The shelf life of lyophilized form is 12 months at -20°C/-80°C.