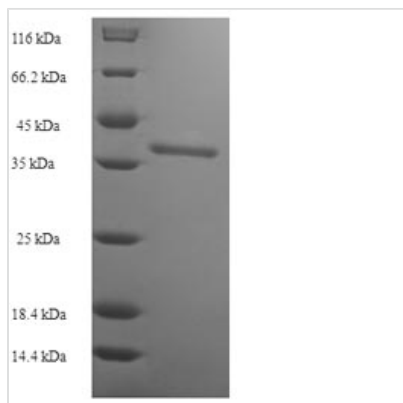




Recombinant Human Leukosialin (SPN), partial

Product Code	CSB-EP022590HU
Relevance	One of the major glycoproteins of thymocytes and T lymphocytes. Plays a role in the physicochemical properties of the T-cell surface and in lectin binding. Presents carbohydrate ligands to selectins. Has an extended rodlike structure that could protrude above the glycocalyx of the cell and allow multiple glycan chains to be accessible for binding. Is a counter-receptor for SN/Siglec-1 . During T-cell activation is actively roved from the T-cell-APC (antigen-presenting cell) contact site thus suggesting a negative regulatory role in adaptive immune response .
Abbreviation	Recombinant Human SPN protein, partial
Storage	The shelf life is related to many factors, storage state, buffer ingredients, storage temperature and the stability of the protein itself. Generally, the shelf life of liquid form is 6 months at -20°C/-80°C. The shelf life of lyophilized form is 12 months at -20°C/-80°C.
Uniprot No.	P16150
Alias	Galactoglycoprotein ;GALGPLeukocyte sialoglycoprotein;Sialophorin; CD43
Product Type	Recombinant Protein
Immunogen Species	Homo sapiens (Human)
Purity	≥ 90% as determined by SDS-PAGE.
Sequence	STTAVQTPTSGEPLVSTSEPLSSKMYTTSITSDPKADSTGDQTSALPPSTSINE GSPLWTSIGASTGSPLPEPTYQEVSIMSSVPQETPHATSHPAVPITANSLGS HTVTGGTITTNSPETSSRTSGAPVTTAASSLETSRGTSGPPLTMATVSLETSGK TSGPPVTMATDSLETSTGTTGPPVTMTTGSLEPSSGASGPQVSSVKLSTMMMS PTTSTNASTVPFRNPDENSR
Research Area	Immunology
Source	E.coli
Target Names	SPN
Expression Region	20-253aa
Notes	Repeated freezing and thawing is not recommended. Store working aliquots at 4°C for up to one week.
Tag Info	N-terminal 6xHis-SUMO-tagged
Mol. Weight	39.5kDa
Protein Length	Extracellular Domain
Image	



(Tris-Glycine gel) Discontinuous SDS-PAGE (reduced) with 5% enrichment gel and 15% separation gel.

Reconstitution

We recommend that this vial be briefly centrifuged prior to opening to bring the contents to the bottom. Please reconstitute protein in deionized sterile water to a concentration of 0.1-1.0 mg/mL. We recommend to add 5-50% of glycerol (final concentration) and aliquot for long-term storage at -20°C/-80°C. Our default final concentration of glycerol is 50%. Customers could use it as reference.

Shelf Life

The shelf life is related to many factors, storage state, buffer ingredients, storage temperature and the stability of the protein itself. Generally, the shelf life of liquid form is 6 months at -20°C/-80°C. The shelf life of lyophilized form is 12 months at -20°C/-80°C.