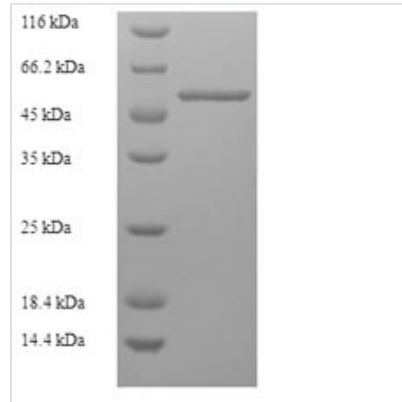




Recombinant *Borrelia burgdorferi* Flagellar filament 41 kDa core protein (fla)

Product Code	CSB-EP319964BUD
Relevance	Component of the core of the flagella.
Abbreviation	Recombinant <i>Borrelia burgdorferi</i> Flagellar filament 41 kDa core protein
Storage	The shelf life is related to many factors, storage state, buffer ingredients, storage temperature and the stability of the protein itself. Generally, the shelf life of liquid form is 6 months at -20°C/-80°C. The shelf life of lyophilized form is 12 months at -20°C/-80°C.
Uniprot No.	P11089
Alias	41 kDa antigen;P41
Product Type	Recombinant Protein
Immunogen Species	<i>Borrelia burgdorferi</i> (strain ATCC 35210 / B31 / CIP 102532 / DSM 4680)
Purity	Greater than 90% as determined by SDS-PAGE.
Sequence	MIINHNTSAINASRNNGINAANLSKTQEKLSSGYRINRASDDAAGMGVSGKINA QIRGLSQASRNTSKAINFIQTTEGNLNEVEKVLVRMKELAVQSGNGTYSDADR GSIQIEIEQLTDEINRIADQAQYNQMHLNKSASQNVRTAEELGMQPAKINTP ASLSGSQASWTLRVHVGANQDEAIVNIYAANVANLFSGEGAQTAQAAPVQE GVQQEGAQQPAPATAPSQGGVNSPVNVTITVDANTSLAKIENAIMISDQRAN LGAFQNRLESIKDSTEYAIENLKASYAQIKDATMTDEVVAATTNSILTQSAMAMI AQANQVPQYVLSLLR
Research Area	Others
Source	E.coli
Target Names	fla
Expression Region	1-336aa
Notes	Repeated freezing and thawing is not recommended. Store working aliquots at 4°C for up to one week.
Tag Info	N-terminal 6xHis-SUMO-tagged
Mol. Weight	51.8kDa
Protein Length	Full Length
Image	



(Tris-Glycine gel) Discontinuous SDS-PAGE (reduced) with 5% enrichment gel and 15% separation gel.

Reconstitution

We recommend that this vial be briefly centrifuged prior to opening to bring the contents to the bottom. Please reconstitute protein in deionized sterile water to a concentration of 0.1-1.0 mg/mL. We recommend to add 5-50% of glycerol (final concentration) and aliquot for long-term storage at -20°C/-80°C. Our default final concentration of glycerol is 50%. Customers could use it as reference.

Shelf Life

The shelf life is related to many factors, storage state, buffer ingredients, storage temperature and the stability of the protein itself. Generally, the shelf life of liquid form is 6 months at -20°C/-80°C. The shelf life of lyophilized form is 12 months at -20°C/-80°C.