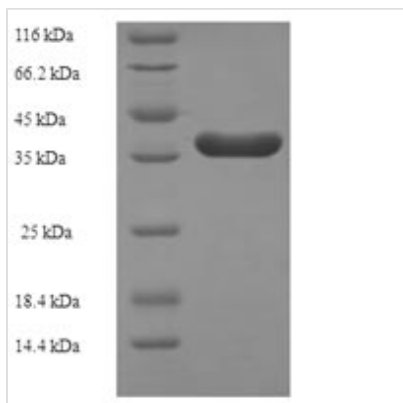




Recombinant Human Core-binding factor subunit beta (CBFB)

Product Code	CSB-EP623835HU
Relevance	CBF binds to the core site, 5'-PYGPYGGT-3', of a number of enhancers and promoters, including murine leukemia virus, polyomavirus enhancer, T-cell receptor enhancers, LCK, IL3 and GM-CSF promoters. CBFB enhances DNA binding by RUNX1.
Abbreviation	Recombinant Human CBFB protein
Storage	The shelf life is related to many factors, storage state, buffer ingredients, storage temperature and the stability of the protein itself. Generally, the shelf life of liquid form is 6 months at -20°C/-80°C. The shelf life of lyophilized form is 12 months at -20°C/-80°C.
Uniprot No.	Q13951
Alias	Polyomavirus enhancer-binding protein 2 beta subunit ;PEA2-beta ;PEBP2-beta;SL3-3 enhancer factor 1 subunit beta;SL3/AKV core-binding factor beta subunit
Product Type	Recombinant Protein
Immunogen Species	Homo sapiens (Human)
Purity	Greater than 90% as determined by SDS-PAGE.
Sequence	MPRVVPDQQRSKFENEFFRKLRSRECEIKYTGFRDRPHEERQARFQNAACRDGR SEIAFVATGTNLSLQFFPASWQGEQRQTPSREYVDLEREAGKVYLKAPMILNG VCVIWKGWIDLQRLDGMGCLFDEERAQQEDALAQQAFEEARRRTREFEDR DRSHREEMEVRSQLLAVTGKKTTRP
Research Area	Epigenetics and Nuclear Signaling
Source	E.coli
Target Names	CBFB
Expression Region	1-182aa
Notes	Repeated freezing and thawing is not recommended. Store working aliquots at 4°C for up to one week.
Tag Info	N-terminal 6xHis-SUMO-tagged
Mol. Weight	37.5kDa
Protein Length	Full Length
Image	



(Tris-Glycine gel) Discontinuous SDS-PAGE (reduced) with 5% enrichment gel and 15% separation gel.

Reconstitution

We recommend that this vial be briefly centrifuged prior to opening to bring the contents to the bottom. Please reconstitute protein in deionized sterile water to a concentration of 0.1-1.0 mg/mL. We recommend to add 5-50% of glycerol (final concentration) and aliquot for long-term storage at -20°C/-80°C. Our default final concentration of glycerol is 50%. Customers could use it as reference.

Shelf Life

The shelf life is related to many factors, storage state, buffer ingredients, storage temperature and the stability of the protein itself. Generally, the shelf life of liquid form is 6 months at -20°C/-80°C. The shelf life of lyophilized form is 12 months at -20°C/-80°C.