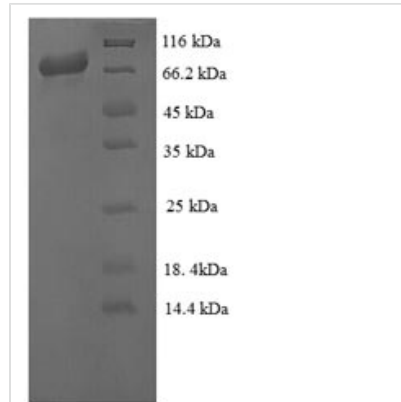


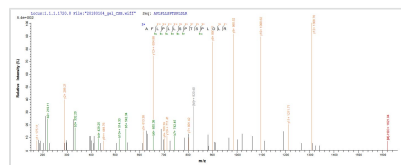


Recombinant *Giardia intestinalis* Endoribonuclease Dicer-like (GL50803_103887)

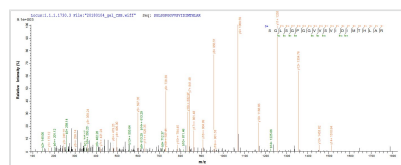
Product Code	CSB-EP419783GFY
Relevance	Involved in cleaving double-stranded RNA in the RNA interference (RNAi) pathway. It produces 21 to 23 bp dsRNAs (siRNAs) which target the selective destruction of homologous RNAs.
Abbreviation	Recombinant <i>Giardia intestinalis</i> GL50803_103887 protein
Storage	The shelf life is related to many factors, storage state, buffer ingredients, storage temperature and the stability of the protein itself. Generally, the shelf life of liquid form is 6 months at -20°C/-80°C. The shelf life of lyophilized form is 12 months at -20°C/-80°C.
Uniprot No.	A8BQJ3
Product Type	Recombinant Protein
Immunogen Species	<i>Giardia intestinalis</i> (strain ATCC 50803 / WB clone C6) (<i>Giardia lamblia</i>)
Purity	≥ 90% as determined by SDS-PAGE.
Sequence	MHALGHCCTVVTTRGPSHWLLLLDTHLGTLPGFKVSAGRGLPAAEVYFEAGP RVLSRRTDATIVAVYQSILFQLLGPTFPASWTEIGATMPHNEYTFPRFISNPPQF ATLAFLPLLSPDPLDLRALMVTQAQLMCDAKRLSDEYTDYSTLSASLHGRMVA TPEISWSLYVVLGIDSTQTSLSYFTRANESITYMRYATAHNIHLRAADLPLVAA VRLDDLKDHQIPAPGSWDDLAPKLRFLPPELCLLLPDEFDLIRVQALQFLPEIAK HICDIQNTICALDKSFPDCGRIGGERYFAITAGLRLDQGRGRGLAGWRTPFGPF GVSHTDVFQRLELLGDAVLGFIVTARLLCLFPDASVGTLEVELKMEVLRNEALNY LVQTLGLPQLAEFSNNLVAKSKTWADMYEEIVGSIFTGPNGIYGCEEFLAKTLM SPEHSKTVGSACPDVTKASKRVCMGEAGAHEFRSLVDYACEQGIVFCSSR VSTMFLERLRDIPAEDMLDWYRLGIQFSHRSGLSGPGGVVSVIDIMTHLARGL WLGSPGFYVEQQTDKNESACPPTIPVLYIYHRSVQCPVLYGSLTETPTGPVAS KVLALYEKILAYESSGGSKHIAAQTVSRSLAVPIPSGTIPFLIRLLQIALTPHVYQK LELLGDAFLKCSLALHLHALHPTLTEGALTRMRQSAETNSVLGRLTKRFPVSVS EVIIESHPKIQPDSKVYGDTFEAILAAILLACGEEAAGAFVREHVLPQVVADA
Source	<i>E. coli</i>
Expression Region	1-754aa
Notes	Repeated freezing and thawing is not recommended. Store working aliquots at 4°C for up to one week.
Tag Info	N-terminal 6xHis-SUMO-tagged
Mol. Weight	98.5kDa
Protein Length	Full Length
Image	



(Tris-Glycine gel) Discontinuous SDS-PAGE (reduced) with 5% enrichment gel and 15% separation gel.



Based on the SEQUEST from database of E.coli host and target protein, the LC-MS/MS Analysis result of CSB-EP419783GFY could indicate that this peptide derived from E.coli-expressed Giardia intestinalis (strain ATCC 50803 / WB clone C6) (Giardia lamblia) GL50803_103887.



Based on the SEQUEST from database of E.coli host and target protein, the LC-MS/MS Analysis result of CSB-EP419783GFY could indicate that this peptide derived from E.coli-expressed Giardia intestinalis (strain ATCC 50803 / WB clone C6) (Giardia lamblia) GL50803_103887.

Reconstitution

We recommend that this vial be briefly centrifuged prior to opening to bring the contents to the bottom. Please reconstitute protein in deionized sterile water to a concentration of 0.1-1.0 mg/mL. We recommend to add 5-50% of glycerol (final concentration) and aliquot for long-term storage at -20°C/-80°C. Our default final concentration of glycerol is 50%. Customers could use it as reference.

Shelf Life

The shelf life is related to many factors, storage state, buffer ingredients, storage temperature and the stability of the protein itself.

Generally, the shelf life of liquid form is 6 months at -20°C/-80°C. The shelf life of lyophilized form is 12 months at -20°C/-80°C.