

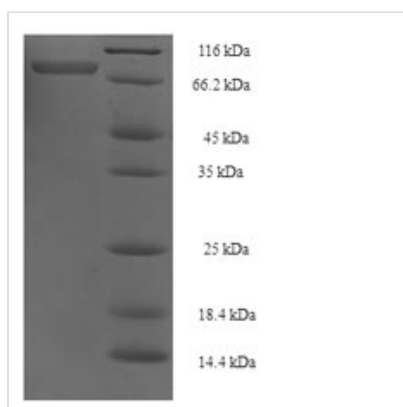


# Recombinant Human TNF receptor-associated factor 5 (TRAF5)

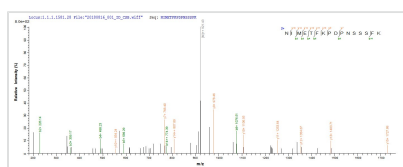
<b>Product Code</b>	CSB-EP024153HU
<b>Relevance</b>	Adapter protein and signal transducer that links members of the tumor necrosis factor receptor family to different signaling pathways by association with the receptor Cytoplasmic domain and kinases. Mediates activation of NF-kappa-B and probably JNK. Seems to be involved in apoptosis. Plays a role in mediating activation of NF-kappa-B by EIF2AK2/PKR.
<b>Abbreviation</b>	Recombinant Human TRAF5 protein
<b>Storage</b>	The shelf life is related to many factors, storage state, buffer ingredients, storage temperature and the stability of the protein itself. Generally, the shelf life of liquid form is 6 months at -20°C/-80°C. The shelf life of lyophilized form is 12 months at -20°C/-80°C.
<b>Uniprot No.</b>	O00463
<b>Alias</b>	RING finger protein 84
<b>Product Type</b>	Recombinant Protein
<b>Immunogen Species</b>	Homo sapiens (Human)
<b>Purity</b>	≥ 90% as determined by SDS-PAGE.
<b>Sequence</b>	MAYSEEHKGMPCGFIRQNSGNSISLDFEPSIEYQFVERLEERYKCAFCHSVLH NPHQTGCGHRFCQHCILSLRELNTVPICPVDKEVIKSQEVFKDNCCKREVLNL YVYCSNAPGCNAKVLGRYQDHLQQCLFQPVQCSNEKCREPVLKDLKEHLS ASCQFRKEKCLYCKKDVVVINLQNHENLCPPEYVFCPNNAKIIKTEVDEHL AVCPAEQDCPFKHYGCAVTDKRRNLQQHEHSALREHMRLVLEKNVQLEEQI SDLHKSLEQKESKIQQLAETIKKLEKEFKQFAQLFGKNGSFLPNIQVFASHIDKS AWLEAQVHQLLQMVNQQQNKFDLRPLMEAVDTVKQKITLLENNDQRLAVLEE ETNKHDTHINIIHKAQLSKNEERFKLLEGTCYNGKLIWKVTDYKMKKREAVDGH TVSIFSQSFYTSRCGYRLCARAYLNGDGSGRGSLSLYFVVMRGEFDSLLQW PFRQRVTLMLLDQSGKKNIMETFKPDPNSSSFKRPDGMNIASGCPRFVAHS VLENAKNAYIKDDTLFLKVAVDLTDLEDL
<b>Research Area</b>	Immunology
<b>Source</b>	E.coli
<b>Target Names</b>	TRAF5
<b>Expression Region</b>	1-557aa
<b>Notes</b>	Repeated freezing and thawing is not recommended. Store working aliquots at 4°C for up to one week.
<b>Tag Info</b>	N-terminal 6xHis-SUMO-tagged
<b>Mol. Weight</b>	80.4kDa
<b>Protein Length</b>	Full Length



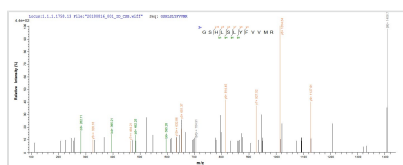
## Image



(Tris-Glycine gel) Discontinuous SDS-PAGE (reduced) with 5% enrichment gel and 15% separation gel.



Based on the SEQUEST from database of E.coli host and target protein, the LC-MS/MS Analysis result of CSB-EP024153HU could indicate that this peptide derived from E.coli-expressed Homo sapiens (Human) TRAF5.



Based on the SEQUEST from database of E.coli host and target protein, the LC-MS/MS Analysis result of CSB-EP024153HU could indicate that this peptide derived from E.coli-expressed Homo sapiens (Human) TRAF5.

## Reconstitution

We recommend that this vial be briefly centrifuged prior to opening to bring the contents to the bottom. Please reconstitute protein in deionized sterile water to a concentration of 0.1-1.0 mg/mL. We recommend to add 5-50% of glycerol (final concentration) and aliquot for long-term storage at -20°C/-80°C. Our default final concentration of glycerol is 50%. Customers could use it as reference.

## Shelf Life

The shelf life is related to many factors, storage state, buffer ingredients, storage temperature and the stability of the protein itself. Generally, the shelf life of liquid form is 6 months at -20°C/-80°C. The shelf life of lyophilized form is 12 months at -20°C/-80°C.