



# Recombinant Human Tyrosine-protein phosphatase non-receptor type substrate 1 (SIRPA), partial

<b>Product Code</b>	CSB-EP021334HU1
<b>Relevance</b>	Immunoglobulin-like cell surface receptor for CD47. Acts as docking protein and induces translocation of PTPN6, PTPN11 and other binding partners from the cytosol to the plasma mbrane. Supports adhesion of cerebellar neurons, neurite outgrowth and glial cell attachment. May play a key role in intracellular signaling during synaptogenesis and in synaptic function . Involved in the negative regulation of receptor tyrosine kinase-coupled cellular responses induced by cell adhesion, growth factors or insulin. Mediates negative regulation of phagocytosis, mast cell activation and dendritic cell activation. CD47 binding prevents maturation of immature dendritic cells and inhibits cytokine production by mature dendritic cells.
<b>Abbreviation</b>	Recombinant Human SIRPA protein, partial
<b>Storage</b>	The shelf life is related to many factors, storage state, buffer ingredients, storage temperature and the stability of the protein itself. Generally, the shelf life of liquid form is 6 months at -20°C/-80°C. The shelf life of lyophilized form is 12 months at -20°C/-80°C.
<b>Uniprot No.</b>	P78324
<b>Alias</b>	Brain Ig-like molecule with tyrosine-based activation motifs ;BitCD172 antigen-like family member Alnhibitory receptor SHPS-1Macrophage fusion receptorMyD-1 antigen;Signal-regulatory protein alpha-1 ;Sirp-alpha-1Signal-regulatory protein alpha-2 ;Sirp-alpha-2Signal-regulatory protein alpha-3 ;Sirp-alpha-3p84; CD172a
<b>Product Type</b>	Recombinant Protein
<b>Immunogen Species</b>	Homo sapiens (Human)
<b>Purity</b>	Greater than 90% as determined by SDS-PAGE.
<b>Sequence</b>	EEELQVIQPDKSVSVAAGEEELQVIQPDKSVSVAAGESAILHCTVTSLIPVGPIQ WFRGAGPARELIYNQKEGHFPRVTTVSESTKRENMDFSISISNITPADAGTYYC VKFRKGSPTDEFKSGAGTELSVRAKPSAPVVSGPAARATPQHTVSFTCESHG FSPRDITLKWFKNGNELSDFQTNVDPVGESVSYSIHSTAKVVLTRDVDHSQVIC EVAHVTLQGDPLRGTANLSETIRVPPTLEVTQQPVRAENQVNVTCQVRKFYPQ RLQLTWLENGNVSRTETASTVTENKDGTYNWMSWLLVNVSAHRDDVKLTCQ VEHDGQPAVSKSHDLKVS AHPKEQGSNTAAENTGSNERNIY
<b>Research Area</b>	Cardiovascular
<b>Source</b>	E.coli
<b>Target Names</b>	SIRPA
<b>Expression Region</b>	31-373aa



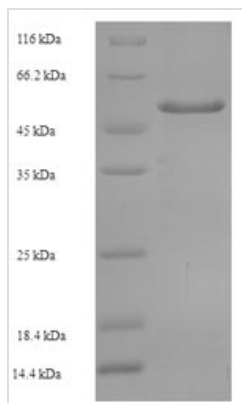
**Notes** Repeated freezing and thawing is not recommended. Store working aliquots at 4°C for up to one week.

**Tag Info** N-terminal 6xHis-SUMO-tagged

**Mol. Weight** 53.7kDa

**Protein Length** Partial of BC026692

**Image**



(Tris-Glycine gel) Discontinuous SDS-PAGE (reduced) with 5% enrichment gel and 15% separation gel.

**Reconstitution** We recommend that this vial be briefly centrifuged prior to opening to bring the contents to the bottom. Please reconstitute protein in deionized sterile water to a concentration of 0.1-1.0 mg/mL. We recommend to add 5-50% of glycerol (final concentration) and aliquot for long-term storage at -20°C/-80°C. Our default final concentration of glycerol is 50%. Customers could use it as reference.

**Shelf Life** The shelf life is related to many factors, storage state, buffer ingredients, storage temperature and the stability of the protein itself. Generally, the shelf life of liquid form is 6 months at -20°C/-80°C. The shelf life of lyophilized form is 12 months at -20°C/-80°C.