

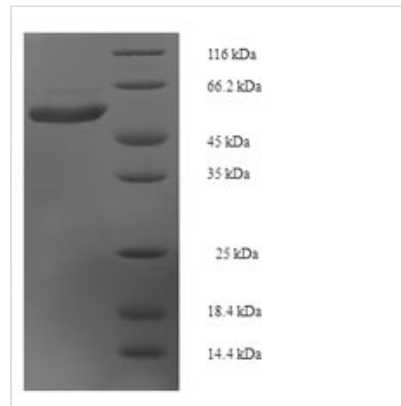


Recombinant Human Interleukin-22 receptor subunit alpha-1 (IL22RA1), partial

Product Code	CSB-EP822717HU
Relevance	Component of the receptor for IL20, IL22 and IL24. Component of IL22 receptor formed by IL22RA1 and IL10RB enabling IL22 signaling via JAK/STAT pathways. IL22 also induces activation of MAPK1/MAPK3 and Akt kinases pathways. Component of one of the receptor for IL20 and IL24 formed by IL22RA1 and IL20RB also signaling through STATs activation. Mediates IL24 antiangiogenic activity as well as IL24 inhibitory effect on endothelial cell tube formation and differentiation.
Abbreviation	Recombinant Human IL22RA1 protein, partial
Storage	The shelf life is related to many factors, storage state, buffer ingredients, storage temperature and the stability of the protein itself. Generally, the shelf life of liquid form is 6 months at -20°C/-80°C. The shelf life of lyophilized form is 12 months at -20°C/-80°C.
Uniprot No.	Q8N6P7
Alias	Cytokine receptor class-II member 9;Cytokine receptor family 2 member 9 ;CRF2-9ZcytoR11
Product Type	Recombinant Protein
Immunogen Species	Homo sapiens (Human)
Purity	≥ 90% as determined by SDS-PAGE.
Sequence	SYRYVTKPPAPPNSLNVQRVLTFFQPLRFIQEHVLIPIVFDLSGPSSLAQPVQYSQ IRVSGPREPAGAPQRHSLSEITYLGQPDISILQPSNVPPPQILSPLSYAPNAAPE VGPPSYAPQVTPEAQFPFYAPQAISKVQPSSYAPQATPDSWPPSYGVCMEGS GKDSPTGTLSSPKHLRPKGQLQKEPPAGSCMLGGLSLQEVTSLAMEESQEAK SLHQPLGICTDRSDPNVLHSGEEGTPQYLKGGQLPLLSSVQIEGHPMSLPLQP PSRPCSPSDQGSPWGLLESLVCPKDEAKSPAPETSDLEQPTELDSLFRGLAL TVQWE
Research Area	Immunology
Source	E.coli
Target Names	IL22RA1
Expression Region	250-573aa
Notes	Repeated freezing and thawing is not recommended. Store working aliquots at 4°C for up to one week.
Tag Info	N-terminal 6xHis-SUMO-tagged
Mol. Weight	50.8kDa
Protein Length	Partial



Image



(Tris-Glycine gel) Discontinuous SDS-PAGE (reduced) with 5% enrichment gel and 15% separation gel.

Reconstitution

We recommend that this vial be briefly centrifuged prior to opening to bring the contents to the bottom. Please reconstitute protein in deionized sterile water to a concentration of 0.1-1.0 mg/mL. We recommend to add 5-50% of glycerol (final concentration) and aliquot for long-term storage at -20°C/-80°C. Our default final concentration of glycerol is 50%. Customers could use it as reference.

Shelf Life

The shelf life is related to many factors, storage state, buffer ingredients, storage temperature and the stability of the protein itself.

Generally, the shelf life of liquid form is 6 months at -20°C/-80°C. The shelf life of lyophilized form is 12 months at -20°C/-80°C.