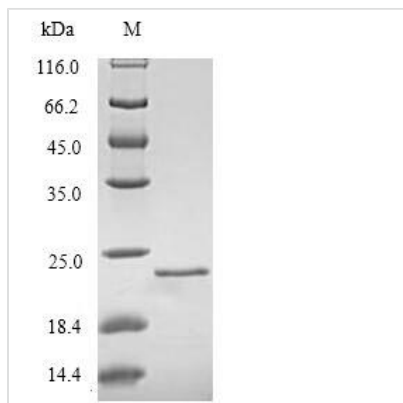




Recombinant Rat Regenerating islet-derived protein 3-beta (Reg3b)

Product Code	CSB-EP326510RA
Relevance	Bactericidal C-type lectin which acts against several intestinal Gram-positive bacteria and Gram-negative bacteria. Lacks antibacterial activity against <i>S.typhimurium</i> . May play a role in protection against infection with <i>S.enteritidis</i> by inhibiting its translocation from the gut lumen into intestinal tissues and further extraintestinal tissues .
Abbreviation	Recombinant Rat Reg3b protein
Storage	The shelf life is related to many factors, storage state, buffer ingredients, storage temperature and the stability of the protein itself. Generally, the shelf life of liquid form is 6 months at -20°C/-80°C. The shelf life of lyophilized form is 12 months at -20°C/-80°C.
Uniprot No.	P25031
Alias	Pancreatitis-associated protein 1;Peptide 23REG-2Regenerating islet-derived protein III-beta ;Reg III-beta
Product Type	Recombinant Protein
Immunogen Species	Rattus norvegicus (Rat)
Purity	Greater than 90% as determined by SDS-PAGE.
Sequence	EDSPKKIPSARISCPKGSQAYGSYCYALFQIPQTWFDAELACQKRPEGHLVSV LNVAEASFLASMVKNTGNSYQYTWIGLHDPTLGGEPNGGGWEWSNNDIMNY VNWERNPSTALDRGFCGSLSRSSGFLRWRDTCVVKLPYVCKFTG
Research Area	Others
Source	E.coli
Target Names	Reg3b
Expression Region	27-175aa
Notes	Repeated freezing and thawing is not recommended. Store working aliquots at 4°C for up to one week.
Tag Info	N-terminal 6xHis-tagged
Mol. Weight	20.6kDa
Protein Length	Full Length of Mature Protein
Image	



(Tris-Glycine gel) Discontinuous SDS-PAGE (reduced) with 5% enrichment gel and 15% separation gel.

Reconstitution

We recommend that this vial be briefly centrifuged prior to opening to bring the contents to the bottom. Please reconstitute protein in deionized sterile water to a concentration of 0.1-1.0 mg/mL. We recommend to add 5-50% of glycerol (final concentration) and aliquot for long-term storage at $-20^{\circ}\text{C}/-80^{\circ}\text{C}$. Our default final concentration of glycerol is 50%. Customers could use it as reference.

Shelf Life

The shelf life is related to many factors, storage state, buffer ingredients, storage temperature and the stability of the protein itself. Generally, the shelf life of liquid form is 6 months at $-20^{\circ}\text{C}/-80^{\circ}\text{C}$. The shelf life of lyophilized form is 12 months at $-20^{\circ}\text{C}/-80^{\circ}\text{C}$.