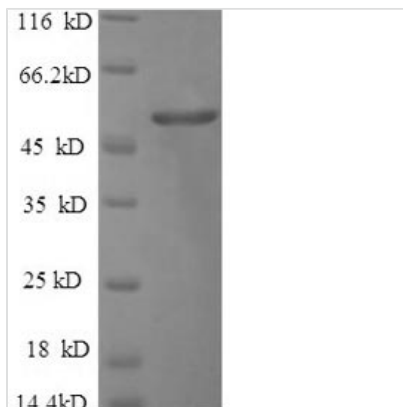


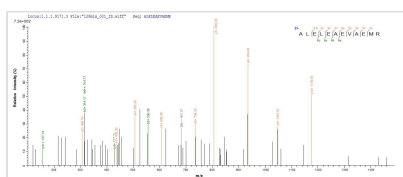


Recombinant Human Cerebellar degeneration-related protein 2 (CDR2)

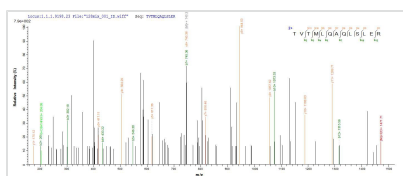
Product Code	CSB-EP005103HU
Abbreviation	Recombinant Human CDR2 protein
Storage	The shelf life is related to many factors, storage state, buffer ingredients, storage temperature and the stability of the protein itself. Generally, the shelf life of liquid form is 6 months at -20°C/-80°C. The shelf life of lyophilized form is 12 months at -20°C/-80°C.
Uniprot No.	Q01850
Alias	Major Yo paraneoplastic antigen;Paraneoplastic cerebellar degeneration-associated antigen
Product Type	Recombinant Protein
Immunogen Species	Homo sapiens (Human)
Purity	≥ 90% as determined by SDS-PAGE.
Sequence	MLAENLVEEFEMKEDEPWYDHQDLQQDLQLAAELGKTLDDRNTLEDSVQQ MYTTNQEQLQEIEYLTQVELLRQMNEQHAKVYEQLDVTARELEETNQKLVAD SKASQQKILSLTETIECLQTNIDHLQSQVEELKSSGQRRSPGKCDQEKPA FACLKELYDLRQHFVYDHFVFAEKITSLQGQSPDEEENEHLKKTVTMLQAQLS LERQKRVTMEEEYGLVLKENSELEQQLGATGAYRARALELEAEVAEMRQMLQ SEHPFVNGVEKLVPSLYVPFKEPSQSLLLEEMFLTVPESHKPLKRSSSETILS SLAGSDIVKGHEETCIRRAKAVKQRGISLLHEVDTQYSALKVKYEELLKCCQEE QDSLCHKAVQTSRAAAKDLTGVNAQSEPVASGWELASVNPEPVSSPTTPPEY KALFKEIFSCIKKTKQEIDEQRTKYRSLSSHS
Research Area	Cancer
Source	E.coli
Target Names	CDR2 PCD17
Expression Region	1-454aa
Notes	Repeated freezing and thawing is not recommended. Store working aliquots at 4°C for up to one week.
Tag Info	N-terminal 6xHis-tagged
Mol. Weight	55.9kDa
Protein Length	Full Length
Image	



(Tris-Glycine gel) Discontinuous SDS-PAGE (reduced) with 5% enrichment gel and 15% separation gel.



Based on the SEQUEST from database of E.coli host and target protein, the LC-MS/MS Analysis result of CSB-EP005103HU could indicate that this peptide derived from E.coli-expressed Homo sapiens (Human) CDR2.



Based on the SEQUEST from database of E.coli host and target protein, the LC-MS/MS Analysis result of CSB-EP005103HU could indicate that this peptide derived from E.coli-expressed Homo sapiens (Human) CDR2.

Reconstitution

We recommend that this vial be briefly centrifuged prior to opening to bring the contents to the bottom. Please reconstitute protein in deionized sterile water to a concentration of 0.1-1.0 mg/mL. We recommend to add 5-50% of glycerol (final concentration) and aliquot for long-term storage at -20°C/-80°C. Our default final concentration of glycerol is 50%. Customers could use it as reference.

Shelf Life

The shelf life is related to many factors, storage state, buffer ingredients, storage temperature and the stability of the protein itself. Generally, the shelf life of liquid form is 6 months at -20°C/-80°C. The shelf life of lyophilized form is 12 months at -20°C/-80°C.