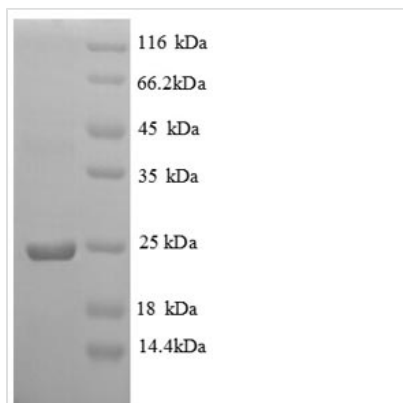




# Recombinant Chicken Vesicle-associated membrane protein 7 (VAMP7), partial

<b>Product Code</b>	CSB-EP025785CH
<b>Relevance</b>	Involved in the targeting and/or fusion of transport vesicles to their target membrane during transport of proteins from the early endosome to the lysosome. Required for heterotypic fusion of late endosomes with lysosomes and homotypic lysosomal fusion. Required for calcium regulated lysosomal exocytosis. Involved in the export of chylomicrons from the endoplasmic reticulum to the cis Golgi. Required for focal exocytosis of late endocytic vesicles during phagosome formation .
<b>Abbreviation</b>	Recombinant Chicken VAMP7 protein, partial
<b>Storage</b>	The shelf life is related to many factors, storage state, buffer ingredients, storage temperature and the stability of the protein itself. Generally, the shelf life of liquid form is 6 months at -20°C/-80°C. The shelf life of lyophilized form is 12 months at -20°C/-80°C.
<b>Uniprot No.</b>	Q5ZL74
<b>Alias</b>	Synaptobrevin-like protein 1
<b>Product Type</b>	Recombinant Protein
<b>Immunogen Species</b>	Gallus gallus (Chicken)
<b>Purity</b>	≥ 90% as determined by SDS-PAGE.
<b>Sequence</b>	AILFAVVARGTTILAKHAWCGGNFLEVTEQILAKIPSENNKLTYSHGNYLFHYIC QDRIIYLCITDDDFERSRAFNFLNEIKKRFQTTYGSRAQTALPYAMNSEFSSVLA AQLKYHSESKGTDQVAETQAQVDELKGIMVRNIDLVAQRGEKLELLIDKTENLV DSSVTFKTTSRNLARA
<b>Research Area</b>	Others
<b>Source</b>	E.coli
<b>Target Names</b>	VAMP7
<b>Protein Names</b>	Synaptobrevin-like protein 1
<b>Expression Region</b>	2-181aa
<b>Notes</b>	Repeated freezing and thawing is not recommended. Store working aliquots at 4°C for up to one week.
<b>Tag Info</b>	N-terminal 6xHis-tagged
<b>Mol. Weight</b>	24.3 kDa
<b>Protein Length</b>	Cytoplasmic Domain
<b>Image</b>	



(Tris-Glycine gel) Discontinuous SDS-PAGE (reduced) with 5% enrichment gel and 15% separation gel.

### Reconstitution

We recommend that this vial be briefly centrifuged prior to opening to bring the contents to the bottom. Please reconstitute protein in deionized sterile water to a concentration of 0.1-1.0 mg/mL. We recommend to add 5-50% of glycerol (final concentration) and aliquot for long-term storage at -20°C/-80°C. Our default final concentration of glycerol is 50%. Customers could use it as reference.

### Shelf Life

The shelf life is related to many factors, storage state, buffer ingredients, storage temperature and the stability of the protein itself. Generally, the shelf life of liquid form is 6 months at -20°C/-80°C. The shelf life of lyophilized form is 12 months at -20°C/-80°C.