

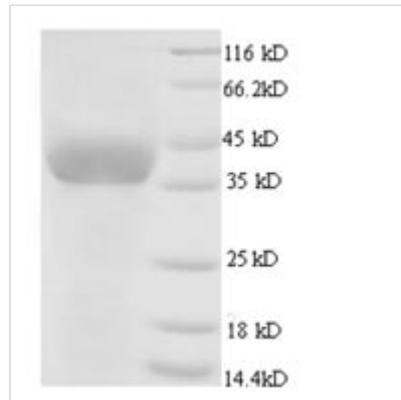


Recombinant Chicken Glyceraldehyde-3-phosphate dehydrogenase (GAPDH)

Product Code	CSB-EP009232CH
Relevance	Has both glyceraldehyde-3-phosphate dehydrogenase and nitrosylase activities, thereby playing a role in glycolysis and nuclear functions, respectively. Glyceraldehyde-3-phosphate dehydrogenase is a key enzyme in glycolysis that catalyzes the first step of the pathway by converting D-glyceraldehyde 3-phosphate (G3P) into 3-phospho-D-glyceroyl phosphate. Modulates the organization and assembly of the cytoskeleton. Also participates in nuclear events including transcription, RNA transport, DNA replication and apoptosis. Nuclear functions are probably due to the nitrosylase activity that mediates cysteine S-nitrosylation of nuclear target proteins .
Abbreviation	Recombinant Chicken GAPDH protein
Storage	The shelf life is related to many factors, storage state, buffer ingredients, storage temperature and the stability of the protein itself. Generally, the shelf life of liquid form is 6 months at -20°C/-80°C. The shelf life of lyophilized form is 12 months at -20°C/-80°C.
Uniprot No.	P00356
Alias	Peptidyl-cysteine S-nitrosylase GAPDH (EC:2.6.99.-)
Product Type	Recombinant Protein
Immunogen Species	Gallus gallus (Chicken)
Purity	≥ 90% as determined by SDS-PAGE.
Sequence	VKVGVNGFGRIGRLVTRAAVLSGKVQVVAINDPFIDLNYMVYMFKYDSTHGHF KGTVKAENGLVINGHAITIFQERDPSNIKWADAGAEYVVESTGVFTTMEKAGA HLKGGAKRVIIISAPSADAPMFVMGVNHEKYDKSLKIVSNASCTTNCLAPLAKVI HDNFGIVEGLMTTVHAITATQKTVDGSPGKLRDGRGAAQNIIPASTGAAKAV GKVIPELNGKLTGMAFRVPTPNVSVVDLTCRLEKPAKYDDIKRVVKAADGPL KGILGYTEDQVVSDFNGDSSHSTFDAGAGIALNDHFVKLVSWYDNEFGYSN RVVDLMVHMASKE
Research Area	Others
Source	E.coli
Target Names	GAPDH
Expression Region	2-333aa
Notes	Repeated freezing and thawing is not recommended. Store working aliquots at 4°C for up to one week.
Tag Info	N-terminal 6xHis-tagged
Mol. Weight	39.6kDa
Protein Length	Full Length of Mature Protein



Image



(Tris-Glycine gel) Discontinuous SDS-PAGE (reduced) with 5% enrichment gel and 15% separation gel.

Reconstitution

We recommend that this vial be briefly centrifuged prior to opening to bring the contents to the bottom. Please reconstitute protein in deionized sterile water to a concentration of 0.1-1.0 mg/mL. We recommend to add 5-50% of glycerol (final concentration) and aliquot for long-term storage at -20°C/-80°C. Our default final concentration of glycerol is 50%. Customers could use it as reference.

Shelf Life

The shelf life is related to many factors, storage state, buffer ingredients, storage temperature and the stability of the protein itself.

Generally, the shelf life of liquid form is 6 months at -20°C/-80°C. The shelf life of lyophilized form is 12 months at -20°C/-80°C.