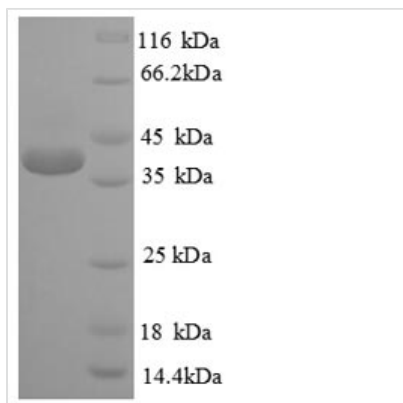




Recombinant Human Cyclic AMP-responsive element-binding protein 1 (CREB1)

Product Code	CSB-EP005947HU
Relevance	Phosphorylation-dependent transcription factor that stimulates transcription upon binding to the DNA cAMP response element (CRE), a sequence present in many viral and cellular promoters. Transcription activation is enhanced by the TORC coactivators which act independently of Ser-133 phosphorylation. Involved in different cellular processes including the synchronization of circadian rhythmicity and the differentiation of adipose cells.
Abbreviation	Recombinant Human CREB1 protein
Storage	The shelf life is related to many factors, storage state, buffer ingredients, storage temperature and the stability of the protein itself. Generally, the shelf life of liquid form is 6 months at -20°C/-80°C. The shelf life of lyophilized form is 12 months at -20°C/-80°C.
Uniprot No.	P16220
Product Type	Recombinant Protein
Immunogen Species	Homo sapiens (Human)
Purity	Greater than 90% as determined by SDS-PAGE.
Sequence	MTMESGAENQQSGDAAVTEAENQQMTVQAQPQIATLAQVSMPTAAHATSSAP TVTLVQLPNGQTVQVHGVIAAQPSVIQSPQVQTVQSSCKDLKRLFSGTQISTI AESEDSQESVDSVTDSQKRREILSRPPSYRKILNDLSSDAPGVPRIEEEKSEEE TSAPAITTVTVPTPIYQTSSGQYIAITQGGAIQLANNGTDGVQGLQLTMTNAAA TQPGTTILQYAQTDDGQQILVPSNQVVVQAASGDVQTYQIRTAPTSTIAPGVVM ASSPALPTQPAEEAARKREVRLMKNREAARECRRKKKEYVKLENRVAVLEN QNKTLIEELKALKDLYCHKSD
Research Area	Immunology
Source	E.coli
Target Names	CREB1
Expression Region	1-341aa
Notes	Repeated freezing and thawing is not recommended. Store working aliquots at 4°C for up to one week.
Tag Info	N-terminal 6xHis-tagged
Mol. Weight	40.7kDa
Protein Length	Full Length
Image	



(Tris-Glycine gel) Discontinuous SDS-PAGE (reduced) with 5% enrichment gel and 15% separation gel.

Reconstitution

We recommend that this vial be briefly centrifuged prior to opening to bring the contents to the bottom. Please reconstitute protein in deionized sterile water to a concentration of 0.1-1.0 mg/mL. We recommend to add 5-50% of glycerol (final concentration) and aliquot for long-term storage at -20°C/-80°C. Our default final concentration of glycerol is 50%. Customers could use it as reference.

Shelf Life

The shelf life is related to many factors, storage state, buffer ingredients, storage temperature and the stability of the protein itself. Generally, the shelf life of liquid form is 6 months at -20°C/-80°C. The shelf life of lyophilized form is 12 months at -20°C/-80°C.