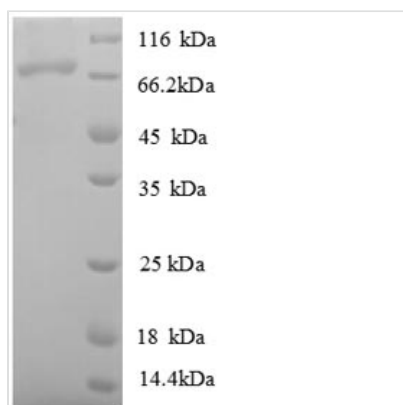




Recombinant Escherichia coli DNA ligase (ligA)

Product Code	CSB-EP322745ENV
Relevance	DNA ligase that catalyzes the formation of phosphodiester linkages between 5'-phosphoryl and 3'-hydroxyl groups in double-stranded DNA using NAD as a coenzyme and as the energy source for the reaction. It is essential for DNA replication and repair of damaged DNA.
Abbreviation	Recombinant E.coli ligA protein
Storage	The shelf life is related to many factors, storage state, buffer ingredients, storage temperature and the stability of the protein itself. Generally, the shelf life of liquid form is 6 months at -20°C/-80°C. The shelf life of lyophilized form is 12 months at -20°C/-80°C.
Uniprot No.	P15042
Alias	Polydeoxyribonucleotide synthase [NAD(+)]
Product Type	Recombinant Protein
Immunogen Species	Escherichia coli (strain K12)
Purity	Greater than 90% as determined by SDS-PAGE.
Sequence	MESIEQQLTELRTTLRHHEYLYHVMDAPEIPDAEYDRLMRELRELETKHPELIT PDSPTQRVGAAPLAAFSQIRHEVPMLSLDNVDFDEESFLAFNKRVDRLKNNEK VTWCCELKLDGLAVSILYENGLVLSAATRGGDGTGEDITSNVRTIRAIPLKLHGE NIPARLEVRGEVFLPQAGFEKINEDARRTGKVFANPRNAAAGSLRQLDPRIT AKRPLTFFCYGVGVLEGGELPDTHLGRLLQFKKWGLPVSDRVTLCESAEVLA FYHKVEEDRPTLGFIDGVIKVNLSLAQQEQLGFVARAPRWAVAFKFPAQEQ MTFVRDVEFQVGRGTGAIPTVARLEPVHVAGVLVSNATLHNADEIERLGLRIGDK VVIRRAGDVIPQVVNVLSERPEDTREVVFPTHCPVCGSDVERVEGEAVARCT GGLICGAQRKESLKHVFSRRAMDVDGMGDKIIDQLVEKEYVHTPADLFKLTAG KLTGLERMGPKSAQNVVNALEKAKETTFARFLYALGIREVGEATAAGLAAYFG TLEALEAASIEELQKVPDVGIVVASHVHNFFAEESNRNVISELLAEGVHWPAPIV INAEIDSPFAGKTVVLTGSLSQMSRDDAKARLVELGAKVAGSVSKKTDLVIAG EAAGSKLAKAQELGIEVIDEAEMLRLLGS
Research Area	Others
Source	E.coli
Target Names	ligA
Expression Region	1-671aa
Notes	Repeated freezing and thawing is not recommended. Store working aliquots at 4°C for up to one week.
Tag Info	N-terminal 6xHis-tagged
Mol. Weight	77.6kDa
Protein Length	Full Length
Image	



(Tris-Glycine gel) Discontinuous SDS-PAGE (reduced) with 5% enrichment gel and 15% separation gel.

Reconstitution

We recommend that this vial be briefly centrifuged prior to opening to bring the contents to the bottom. Please reconstitute protein in deionized sterile water to a concentration of 0.1-1.0 mg/mL. We recommend to add 5-50% of glycerol (final concentration) and aliquot for long-term storage at -20°C/-80°C. Our default final concentration of glycerol is 50%. Customers could use it as reference.

Shelf Life

The shelf life is related to many factors, storage state, buffer ingredients, storage temperature and the stability of the protein itself. Generally, the shelf life of liquid form is 6 months at -20°C/-80°C. The shelf life of lyophilized form is 12 months at -20°C/-80°C.