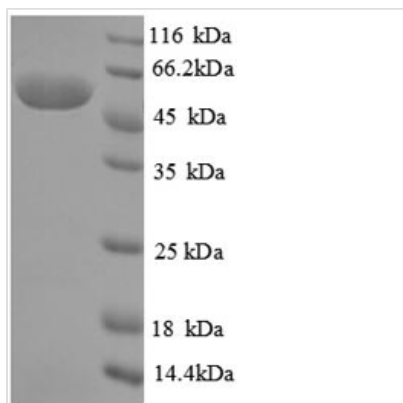


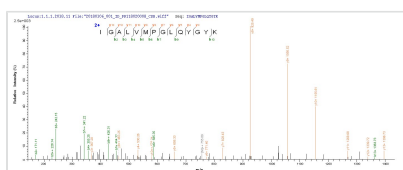


# Recombinant Pseudomonas putida Creatinine amidohydrolase (crnA)

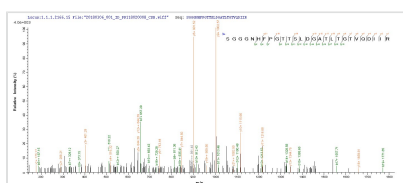
<b>Product Code</b>	CSB-EP028075FFZ
<b>Relevance</b>	Cyclic amidohydrolase that catalyzes the reversible conversion of creatinine to creatine. Is also active toward glycohydrazide, though the reaction rate is very low, but it is completely inert toward hydantoin and its derivatives.
<b>Abbreviation</b>	Recombinant Pseudomonas putida crnA protein
<b>Storage</b>	The shelf life is related to many factors, storage state, buffer ingredients, storage temperature and the stability of the protein itself. Generally, the shelf life of liquid form is 6 months at -20°C/-80°C. The shelf life of lyophilized form is 12 months at -20°C/-80°C.
<b>Uniprot No.</b>	P83772
<b>Alias</b>	Creatininase
<b>Product Type</b>	Recombinant Protein
<b>Immunogen Species</b>	Pseudomonas putida (Arthrobacter siderocapsulatus)
<b>Purity</b>	≥ 90% as determined by SDS-PAGE.
<b>Sequence</b>	MSKSVFVVGELTWKEYEARVAAGDCVLMPLVGALEQHGHHMCMNVDVLLPTA VCKRVAERIGALVMPGLQYGYKSQQKSGGGNHFPGTTSLDGATLTGTVQDIIR ELARHGARRLLMNGHYENSMFIVEGIDLALRELRYAGIQDFKVVVLSYWDFV KDPAVIQQLYPEGFLGWDIEHGGVFETSLMLALYPDLVDLDRVVDHPPATFPP YDVFPVDPARTPAPGTLSSAKTASREKGELILEVCVQGIADAIREEFPT
<b>Research Area</b>	Others
<b>Source</b>	E.coli
<b>Target Names</b>	crnA
<b>Protein Names</b>	Recommended name:Creatinine amidohydrolaseEC=3.5.2.10Alternative name(s):Creatininase
<b>Expression Region</b>	1-260aa
<b>Notes</b>	Repeated freezing and thawing is not recommended. Store working aliquots at 4°C for up to one week.
<b>Tag Info</b>	N-terminal GST-tagged
<b>Mol. Weight</b>	55.6kDa
<b>Protein Length</b>	Full Length
<b>Image</b>	



(Tris-Glycine gel) Discontinuous SDS-PAGE (reduced) with 5% enrichment gel and 15% separation gel.



Based on the SEQUEST from database of E.coli host and target protein, the LC-MS/MS Analysis result of CSB-EP028075FFZ could indicate that this peptide derived from E.coli-expressed *Pseudomonas putida* (*Arthrobacter siderocapsulatus*) crnA.



Based on the SEQUEST from database of E.coli host and target protein, the LC-MS/MS Analysis result of CSB-EP028075FFZ could indicate that this peptide derived from E.coli-expressed *Pseudomonas putida* (*Arthrobacter siderocapsulatus*) crnA.

### Reconstitution

We recommend that this vial be briefly centrifuged prior to opening to bring the contents to the bottom. Please reconstitute protein in deionized sterile water to a concentration of 0.1-1.0 mg/mL. We recommend to add 5-50% of glycerol (final concentration) and aliquot for long-term storage at -20°C/-80°C. Our default final concentration of glycerol is 50%. Customers could use it as reference.

### Shelf Life

The shelf life is related to many factors, storage state, buffer ingredients, storage temperature and the stability of the protein itself. Generally, the shelf life of liquid form is 6 months at -20°C/-80°C. The shelf life of lyophilized form is 12 months at -20°C/-80°C.