



Recombinant Mouse WD repeat-containing and planar cell polarity effector protein fritz homolog (Wdpcp)

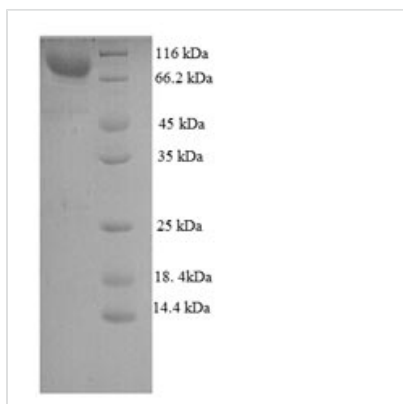
Product Code	CSB-EP804911MO
Relevance	Probable effector of the planar cell polarity signaling pathway which regulates the septin cytoskeleton in both ciliogenesis and collective cell movements.
Abbreviation	Recombinant Mouse Wdpcp protein
Storage	The shelf life is related to many factors, storage state, buffer ingredients, storage temperature and the stability of the protein itself. Generally, the shelf life of liquid form is 6 months at -20°C/-80°C. The shelf life of lyophilized form is 12 months at -20°C/-80°C.
Uniprot No.	Q8C456
Alias	Homolog-13WD repeat-containing and planar cell polarity effector protein
Product Type	Recombinant Protein
Immunogen Species	Mus musculus (Mouse)
Purity	Greater than 90% as determined by SDS-PAGE.
Sequence	MSFCLTELHLWSLKSTLHIADRDIGVYQYYDKKDPSVSATEHGNLEEKQRLAE SRDYPWTLKNRRPEKLRDSLKELEELMQSSPCVLSKWWSKYICQLLFGSGVLV SLSLSGPQLEKVVDRSLVGLISDTISDALLTDSFIILSFLAQNKLCFIQFTKKMD SLDGNKRLEKLSALDLKISYYDIPGPANRTIDRHLAVNSTQDLVVCWWPLVSDD VWPWTPVSSEKDRANMLLLGFTQGGLEVLFSVVRTEWSPLDVHFGTKQPYQV FTVECSVSDKEPMADSCIYESVRNKLHCVSVTRIPLRSKAISCCRNSTEDKLIV GCEDSSVILYEAHRGVTLLAQAELRPSLISCHPSGAILLVGSNQGELQIFDIALS PINIQLLAEDYSPKETLQFKKFFDVSSSLVQMQWMAPPVVFQKPKRGEICDLLF LRFNKGPLGVLLFKLGILTRGQLGLVDLILQYIHYSEVYEAISILRSMDWDTLGG QCLIGMGTIVNHLLRQRLTPEREAQLEASLGTIFYAPTRPLDTTILEYREPVSKY ARRLFHLLRYKRFEKAFLLAVDIGARDLFMDIHYLALDMGELALAEVARRRAH DIDVESVSSGVELLGPLDRRDMLNEGFASSALMPEGENKFPGLLPSIGSTHMQ TLQQKIPNGPSSRWAIERRTEEEEEEEEEEEEEELCTDSSGATTWNAEGELKED QRKQDIGDVGSLRMVHFGLV
Research Area	Others
Source	E.coli
Target Names	Wdpcp
Expression Region	1-722aa
Notes	Repeated freezing and thawing is not recommended. Store working aliquots at 4°C for up to one week.
Tag Info	N-terminal GST-tagged



Mol. Weight 108.7kDa

Protein Length Full Length

Image



(Tris-Glycine gel) Discontinuous SDS-PAGE (reduced) with 5% enrichment gel and 15% separation gel.

Reconstitution

We recommend that this vial be briefly centrifuged prior to opening to bring the contents to the bottom. Please reconstitute protein in deionized sterile water to a concentration of 0.1-1.0 mg/mL. We recommend to add 5-50% of glycerol (final concentration) and aliquot for long-term storage at -20°C/-80°C. Our default final concentration of glycerol is 50%. Customers could use it as reference.

Shelf Life

The shelf life is related to many factors, storage state, buffer ingredients, storage temperature and the stability of the protein itself. Generally, the shelf life of liquid form is 6 months at -20°C/-80°C. The shelf life of lyophilized form is 12 months at -20°C/-80°C.