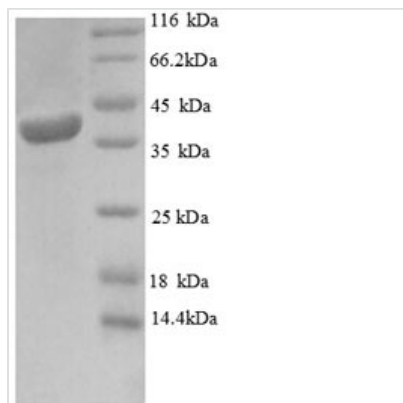




Recombinant Human Mitochondrial import inner membrane translocase subunit TIM16 (PAM16)

Product Code	CSB-EP896711HU
Relevance	Regulates ATP-dependent protein translocation into the mitochondrial matrix. Inhibits DNAJC19 stimulation of HSPA9/Mortalin ATPase activity.
Abbreviation	Recombinant Human PAM16 protein
Storage	The shelf life is related to many factors, storage state, buffer ingredients, storage temperature and the stability of the protein itself. Generally, the shelf life of liquid form is 6 months at -20°C/-80°C. The shelf life of lyophilized form is 12 months at -20°C/-80°C.
Uniprot No.	Q9Y3D7
Alias	Mitochondria-associated granulocyte macrophage CSF-signaling molecule Presequence translocated-associated motor subunit PAM16
Product Type	Recombinant Protein
Immunogen Species	Homo sapiens (Human)
Purity	Greater than 90% as determined by SDS-PAGE.
Sequence	MAKYLAQIIVMGVQVVGRAFARALRQEFAASRAAADARGRAGHRSAASNLS GLSLQEAQQILNVSKLSPEEVQKNYEHFKVNDKSVGGSFYLQSKVVRAKERL DEELKIQAQEDREKQMPHT
Research Area	Signal Transduction
Source	E.coli
Target Names	PAM16
Expression Region	1-125aa
Notes	Repeated freezing and thawing is not recommended. Store working aliquots at 4°C for up to one week.
Tag Info	N-terminal GST-tagged
Mol. Weight	40.8kDa
Protein Length	Full Length
Image	



(Tris-Glycine gel) Discontinuous SDS-PAGE (reduced) with 5% enrichment gel and 15% separation gel.

Reconstitution

We recommend that this vial be briefly centrifuged prior to opening to bring the contents to the bottom. Please reconstitute protein in deionized sterile water to a concentration of 0.1-1.0 mg/mL. We recommend to add 5-50% of glycerol (final concentration) and aliquot for long-term storage at -20°C/-80°C. Our default final concentration of glycerol is 50%. Customers could use it as reference.

Shelf Life

The shelf life is related to many factors, storage state, buffer ingredients, storage temperature and the stability of the protein itself. Generally, the shelf life of liquid form is 6 months at -20°C/-80°C. The shelf life of lyophilized form is 12 months at -20°C/-80°C.